

# Casters

## Plate Type Fixed

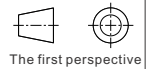
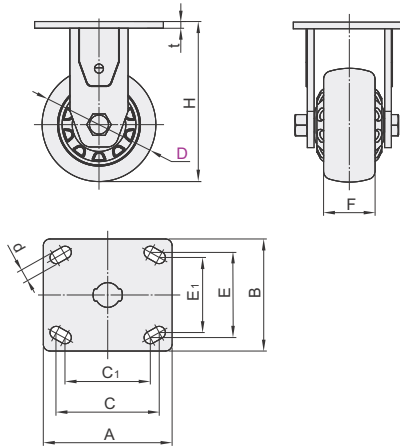
Medium-Heavy Load(American-Type Baseplate)

Code	Bracket					Wheel			Bearing	
	Type	Material	Surface Treatment	Stopper	Baseplate Standard	Wheel Code	Material	Color	Swiveling Part	Wheel
CEK01	Plate Type Fixed	Q235A	※Zinc-plated Electrophoresis (Black Paint)	—	American-Tyle	P	Polypropylene	Gray	None	Have
						U	Polyurethane	Orange		
						N	Nylon	Natural Color		
						UA	Polyurethane with Iron Core	Red		

### Features

- The design of dual tracks arc-shaped steel inverse-bowl ensures loading and flexibility.
- The lateral side of the caster has the characteristics of impact resistance and wear resistance.
- With better resilience which makes it more labor-saving than other materials.
- It is suitable for use in relatively smooth occasions where anti-wrapping requirements are required.
- The operating temperature is -15~80°C.
- The Shore hardness of the wheel surface is 65D.

※When the wheel material is P (Polypropylene) and UA (Polyurethane with Iron Core), the surface treatment of the bracket is zinc-plated, and the rest is black electrophoresis.



The first perspective

P(Polypropylene)



U(Polyurethane)



N(Nylon)



Inventory

Part Number	Code	D	Wheel Material	H	t	F	A	B	C	E	C1	E1	d	Allowable Load(kg)				Weight(Kg)				
														P	U	N	UA	P	U	N	UA	
CEK01	100		P(Polypropylene)	144											265	280	290	280	1.36	1.43	1.45	2.4
	125		U(Polyurethane)	165	6	50	118	103	92	76	76	67	11		325	340	355	350	1.51	1.49	1.68	2.79
	150		UA(Polyurethane with Iron Core)	191											400	380	425	400	1.76	1.98	2	3.29

ⓘ When the wheel material is N(Nylon), the wheel width is F = 45; when the wheel material is U(Polyurethane), the wheel width is F = 48.



Part Number	Code	D	Wheel Material	H
CEK01	100		P	144
CEK01	125		U	165

CEK01—D100—P



Discount price	
Per	1~19 20~
Price	100% Additional quotation

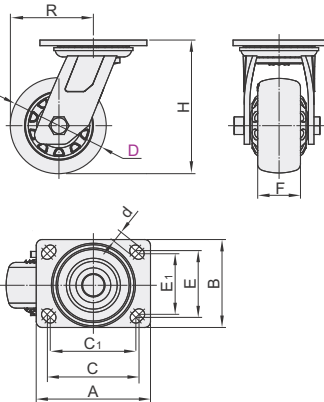


Delivery
6

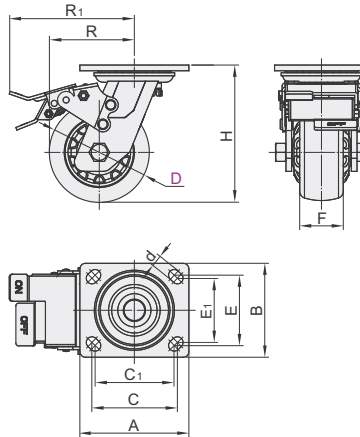
Code	Bracket				Wheel Material	Bearing	
	Type	Material	Surface Treatment	Stopper		Swiveling Part	Wheel
CEL01	Plate Type Swivel	Q235A	*Zinc-plated Electrophoresis (Black Paint)	—	P(Polypropylene)Beige U(Polyurethane)Orange UA(Polyurethane with Iron Core)Red* N(Nylon)White	Have	Double Ball
CEL11				Hardware Side Stopper			
CEL21				Hardware Double Stopper			

① The polyurethane wheel with the \* symbol has an iron core inside.  
 ✖ When the wheel Material is P (Polypropylene) and UA (Polyurethane with Iron Core), Bracket's Surface Treatment is Zinc-plated, and the rest is black paint electrophoresis.

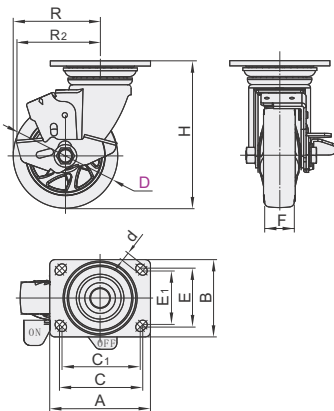
No Stopper  
CEL01



Hardware Double Stopper  
CEL21



Hardware Side Stopper  
CEL11



### Features

- The design of dual tracks arc-shaped steel inverse-bowl ensures loading and flexibility.
- The lateral side of the caster has the characteristics of impact resistance and wear resistance.
- With better resilience which makes it more labor-saving than other materials.
- Suitable on various grounds.
- Widely used in different industries.
- Operating temperature -35~80°C.
- Shore hardness of the wheel surface ≥100A.

### Note

- The appearance of the active bracket is different.
- The wheel curvature and cover style are different, as well the diameter and width.
- The brake structure is same but the appearance is different.
- With same size, the installation height and rotating radius may different.

U(Polyurethane)



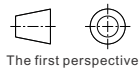
UA(Polyurethane with Iron Core)



N(Nylon)



Inventory



Part Number Code	D	Wheel Material	H	F	A	B	C	E	C1	E1	d	R	R1	R2	Allowable Load(kg)				Weight(Kg)			
															P	U	UA	N	P	U	UA	N
CEL01	100	P(Polypropylene)	144									81	129	91	280	240	280	300	1.84	1.92	2.68	1.92
CEL11	125	U(Polyurethane)	165	50	118	103	92	76	76	67	11	96	129	96	340	295	350	360	1.97	2.13	3.07	2.11
CEL21	150	UA(Polyurethane with Iron Core)																				
		N(Nylon)	191									115	141	115	420	355	400	430	2.25	2.45	3.7	2.43

① When the wheel material is N(Nylon), the wheel width F=45; when the wheel material is U(Pyurethane), the wheel width F=48.



Please order as shown

Part Number	Code	Wheel Material	H
CEL01	100	P	144
CEL11	125	U	165

CEL01—D100—P



Discount price
Per 1~19 20~
Price 100% Additional quotation



Delivery
6

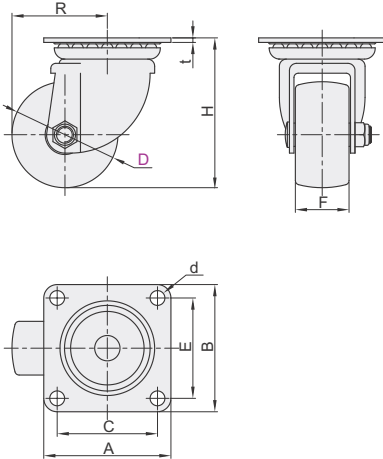
# Plate Type Swivel ▶ Medium-Heavy Load, Japan - Type Baseplate

## Casters

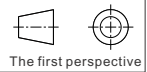
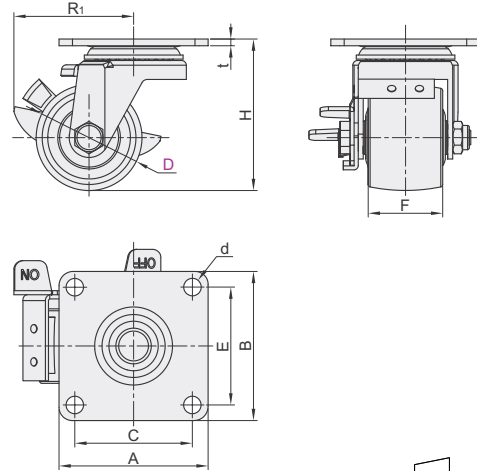
Code	Bracket					Wheel			
	Type	Material	Surface Treatment	Stopper	Baseplate Standard	Wheel Code	Material	Color	Bearing
CFQ01	Plate Type Swivel	SPHC	Zinc-plated	—	Japan-Type	NM	Reinforced Nylon	Black	Double Ball
CFQ02				Hardware Side Stopper					



No Stopper  
**CFQ01**



Hardware Side Stopper  
**CFQ02**



Part Number		Wheel Code	H	t	F	A	B	C	E	d	R	R <sub>1</sub>	Allowable Load (kg)	Reference Weight (kg)
Code	D													
No Stopper <b>CFQ01</b>	65		90	4	45	90	90	71	71	10.5	62.5	72	250	0.36
Hardware Side Stopper <b>CFQ02</b>	75	NM	102	4	45	90	90	71	71	10.5	67.5	72	300	0.38

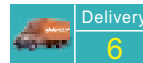


Part Number	Wheel Code	H
Code D		
CFQ01 65	NM	92
CFQ02 75	NM	102

CFQ01 — D65 — NM



Discount price	
Per	1~19 20~
Price	100% Additional quotation



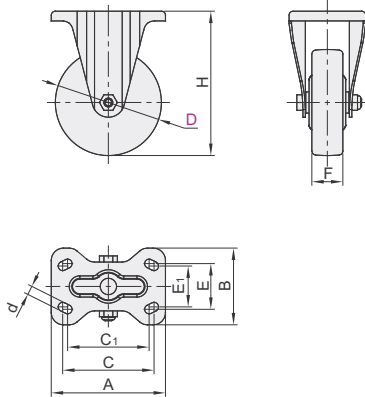
# Casters

## Plate Type Fixed Heavy Load

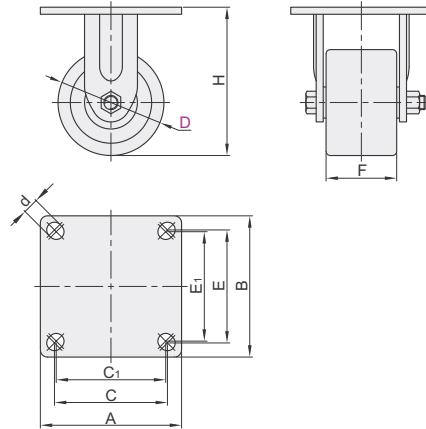
Code	Bracket				Wheel			
	Type	Material	Surface Treatment	Stopper	Wheel Code	Material	Color	Bearing
CLB01	Plate Type Fixed	Q235A	Zinc-plated	—	UC	Polyurethane	Green	Double Ball
			RB		Rubber	Black	Double Ball	
CLB06			Electrophoresis (Black Paint)		N	Nylon	Black	Double Ball



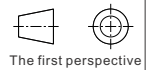
CLB01



CLB06



CLB01 can be used with CLC01/02 Swivel casters. For detailed dimensions, see next page.  
 CLB06 can be used with CEL31/41 Swivel casters. For detailed dimensions, see next page.



Part Number		Wheel Code	H	F	A	B	C	C <sub>1</sub>	E	E <sub>1</sub>	d	Allowable Load(kg)			Reference Weight(kg)		
Code	D											UC	RB	N	UC	RB	N
CLB01	100		144	32	110	78	80	—	45	—	—	180	120	—	1.19	1.17	—
	130	UC	177	38	140	94	112	100	56	50	11	250	180	—	1.54	1.50	—
	150	RB	198	40	—	—	—	—	—	—	—	300	200	—	1.79	1.76	—
	200		250	42	150	105	119	112	63	56	13	400	250	—	2.21	2.19	—
CLB06	50		79	38	84	84	64	53	64	53	8.5	—	—	300	—	—	0.8
	65		95	50	100	100	80	77.5	80	77.5	11	—	—	500	—	—	0.93
	65A	N	100	40	110	85	85	—	60	—	9	—	—	300	—	—	0.97
	75		105	50	100	100	80	77.5	80	77.5	11	—	—	600	—	—	1.08
	75A		105	45	110	85	85	—	60	—	9	—	—	400	—	—	1.10



Part Number	Wheel Code	H
Code D		
CLB01	UC	144
	RB	177

CLB01—D100—UC



Discount price	
Per	1~19 20~
Price	100% Additional quotation

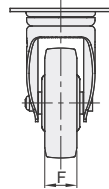
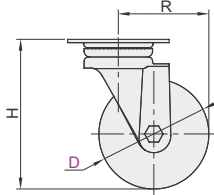


Delivery
6

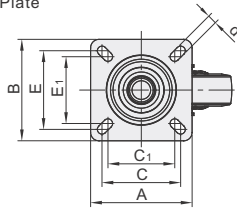
Code	Bracket				Wheel			
	Type	Material	Surface Treatment	Stopper	Code	Material	Color	Bearing
CLC01	Plate Type Swivel	Q235A	Zinc-plated	—	UC	Polyurethane	Green	Double Ball
CLC02				Hardware Double Stopper	RB	Rubber	Black	Double Ball
CEL31			Electrophoresis (Black Paint)	—	N	Nylon	Black	Double Ball
CEL41				Plastic Single Stopper	UU	Polyurethane	Yellow	Double Ball



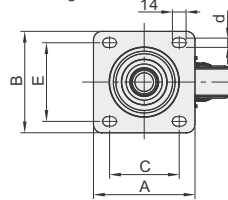
No Stopper  
CLC01  
CEL31



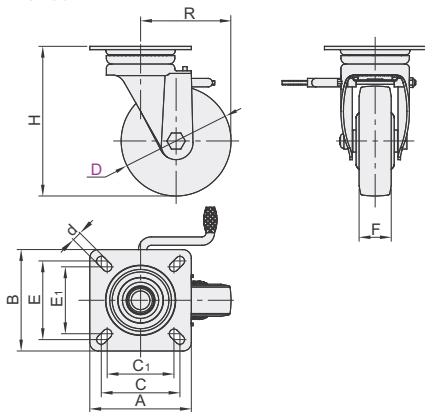
CLC01  
CEL31-D50/65/75  
Mounting Plate



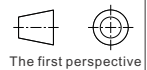
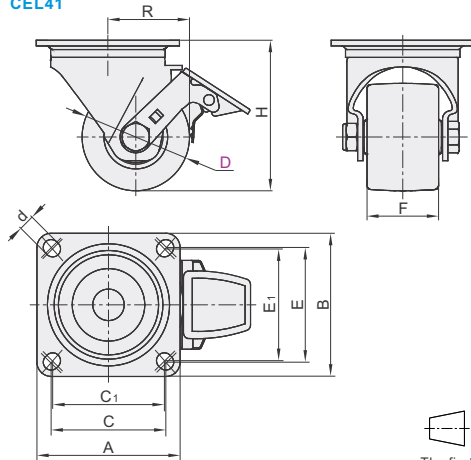
CEL31-D65A/D75A  
Mounting Plate



Hardware Double Stopper  
CLC02



Plastic Single Stopper  
CEL41



Part Number		Wheel Code											Allowable Load (kg)		Reference Weight(kg)			
Code	D		H	F	A	B	C	C <sub>1</sub>	E	E <sub>1</sub>	d	R	UC	RB	CLC01 UC	CLC01 RB	CLC02 UC	CLC02 RB
No Stopper CLC01	100	UC	144	32	95	95	73	68	73	68		81	180	120	1.20	1.00	1.30	1.10
	130		177	38	120	120	93	79	93	79	11	107	250	180	2.20	2.00	2.30	2.10
Hardware Double Stopper CLC02	150	RB	198	40	120	120	93	79	93	79		120	300	200	2.60	2.30	2.80	2.50
	200		250	42	140	140	115	100	115	100	13	153	400	250	4.10	4.00	4.10	3.97

Part Number		Wheel Code											Allowable Load (kg)		Reference Weight(kg)	
Code	D		H	F	A	B	C	C <sub>1</sub>	E	E <sub>1</sub>	d	R	UC	RB	CEL31 UC	CEL31 RB
No Stopper CEL31	50	N UU	79	38*	84	84	64	53	64	53	8.5	39	300		0.70	0.70
	65 (65A)		95	50	100	100	80	77	80	77.5	11	52.5	500		1.14	1.16
Plastic Single Stopper CEL41	75	N	100	40	110	85	85	—	60	—	9	57	300		0.68	—
	75A		105	50	100	100	80	77	80	77.5	11	55	600		1.12	1.60
			45	110	85	85	—	60	—	9	62	400		1.56	—	

① Specifications with ( ) do not apply to CEL41.

② The wheel width F value of CEL31-D50-N marked with \* is 38, and the wheel width F value of CEL31-D50-UU is 35.



Part Number	Wheel Code
CLC01	UC
CLC02	RB
CEL31	N
CEL41	UU



Discount price
Per 1~19
Price 100%
Additional quotation



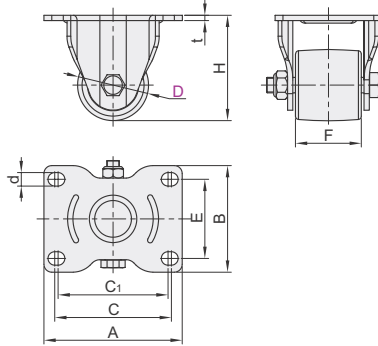
Delivery
6

# Casters

## Plate Type Fixed/Plate Type Swivel Extra Heavy Load

### Plate Type Fixed

Code	Bracket				Wheel			
	Type	Material	Surface Treatment	Stopper	Wheel Code	Material	Color	Bearing
CGM11	Plate Type Fixed	Q235A	Electrophoresis (Black Paint)	—	NQ	Reinforced	Black	Double
					NZ	Nylon	White	Bearing

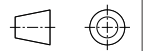
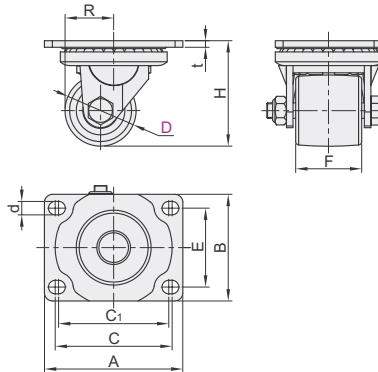


The first perspective

Part Number		Wheel Code	H	F	A	B	C	C <sub>1</sub>	E	d	t	Allowable Load (Kg)	Reference Weight (kg)
Code	D												
CGM11	54	NQ	80	50	105	81	88.6	83.4	60	10.4	5	600	0.7
	75	NZ	104									800	0.9

### Plate Type Swivel

Code	Bracket				Wheel			
	Type	Material	Surface Treatment	Stopper	Wheel Code	Material	Color	Bearing
CGM02	Plate Type Swivel	Q235A	Electrophoresis (Black Paint)	—	NQ	Reinforced	Black	Double
					NZ	Nylon	White	Bearing



The first perspective

Part Number		Wheel Code	H	F	A	B	C	C <sub>1</sub>	E	d	R	t	Allowable Load (Kg)	Reference Weight (kg)
Code	D													
CGM02	54	NQ	80	50	105	81	88.6	83.4	60	10.4	37	5	600	1.13
	75	NZ	104								59.5			800

### Plate Type Fixed

Part Number	Wheel Code
CGM11	NQ
CGM11	NZ

CGM11 — D54 — NQ



Please order as shown



Discount price	
Per	1~19 20~
Price	100% Additional quotation



Delivery  
6

# Plate Type Swivel

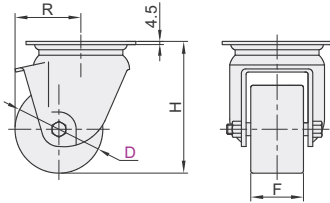
Extra Heavy Load

# Casters

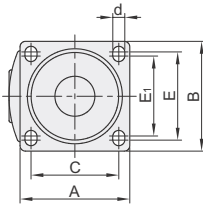
Code	Bracket				Wheel			
	Type	Material	Surface Treatment	Stopper	Wheel Code	Material	Color	Bearing
CGM01	Plate Type Swivel	Q235A	Zinc-plated	—	NS	MC Nylon	Black	Double Bearing
					UX	Polyurethane	Yellow	Four Bearing



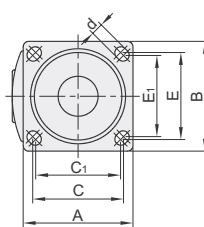
D=65/75/80/100



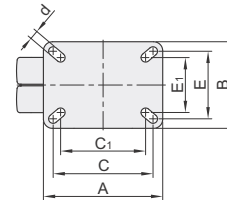
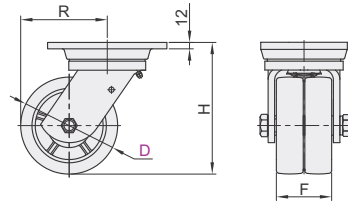
D: 65/75/80



D: 100

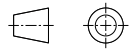


D=150/202



### Features

- The support is forged and heat-treated for higher load.
- High-strength polyurethane material is wear-resistant, reduces noise, and leaves no trace on the ground.
- The double-wheel design reduces the resistance by half when turning, making the rotation more flexible.



The first perspective

Part Number		Wheel Code	H	F	A	B	C	C <sub>1</sub>	E	E <sub>1</sub>	d	R	Allowable Load (kg)	Reference Weight (kg)
Code	D													
CGM01	65	NS	97	48	100	85	80	—	65	60	9	46.5	600	1.57
	75		107											
	80		120											
	100	UX	140	150	110	121	105	80	59	13	70	800	2.15	
	150		204	82	184.5	134	154.5	131.5	104.5	85	14	135	1000	11.1
	202		269	84	184							160	1500	14.5



Part Number	Wheel Code
Code D	
CGM01	UX
	D150
	202

CGM01— D150 —UX



Discount price	
Per	1~19 20~
Price	100% Additional quotation



Delivery
6

# Low Center of Gravity Casters

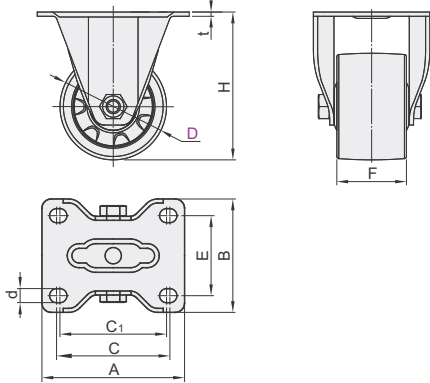
## Plate Type Fixed/Plate Type Swivel Heavy Load

### Plate Type Fixed

Code	Bracket				Wheel Material	Bearing	
	Type	Material	Surface Treatment	Stopper		Swiveling Part	Wheel
CGK01	Plate Type Fixed	Q235A	Baked Paint(Dark Green)	—	Nylon(Black)	None	Double Ball

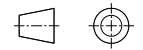


Inventory



### Features

- The wheel profile is one time shaping through plastic injection, which is strong, wear-resistant and anti-aging.
- Suitable for long-term fixed precision machinery, as well heavy load and low speed transportation (<2KM/H)
- Operating temperature -35~80°C.
- Shore hardness of the wheel surface is 65D.



The first perspective

Part Number	D	H	t	F	A	B	C	E	C1	d	t	Allowable Load (kg)	Weight (Kg)
CGK01	63	96										400	0.62
	75	108	4	50	108	89	85	60	80	11	4	500	0.69
	100	133.5										800	0.76



Please order as shown

Part Number	D	H
Code	D	H
CGK01	63	96
	75	108

CGK01—D63



Discount price	
Per	1~19 20~
Price	100% Additional quotation



Delivery
6

### Plate Type Swivel

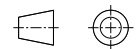
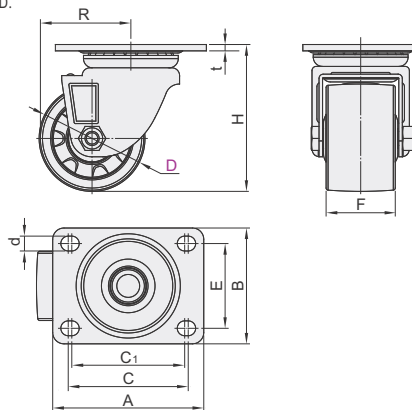
Code	Bracket				Wheel Material	Bearing	
	Type	Material	Surface Treatment	Stopper		Swiveling Part	Wheel
CGL01	Plate Type Swivel	Q235A	Baked Paint (Dark Green)	—	Nylon(Black)	Have	Double Ball



Inventory self made

### Features

- Ultra-low structure and unique design of dual tracks arc-shaped steel inverse-bowl is more weight resistant and practical
- The wheel profile is one time shaping through plastic injection, which is strong, wear-resistant and anti-aging.
- Suitable for long-term fixed precision machinery, as well heavy load and low speed transportation (<2KM/H).
- Operating temperature -35~80°C.
- Shore hardness of the wheel surface 65D.



The first perspective

Part Number	D	H	t	F	A	B	C	E	C1	d	R	Allowable Load (kg)	Weight (Kg)
CGL01	63	96									58	400	1.09
	75	108	4	50	107	82	85	60	80	11	64	500	1.16
	100	133.5									85.5	800	1.25



Please order as shown

Part Number	D	H
Code	D	H
CGL01	63	96
	75	108

CGL01—D63



Discount price	
Per	1~19 20~
Price	100% Additional quotation

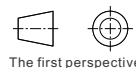
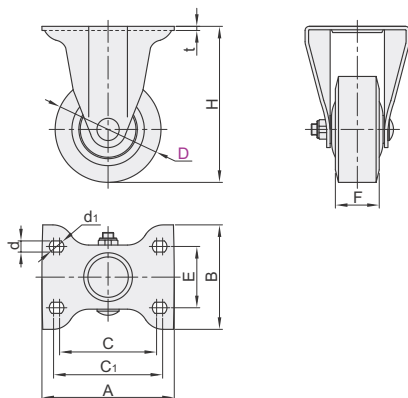


Delivery
6



### Plate Type Fixed

Code	Bracket				Wheel			
	Type	Material	Surface Treatment	Stopper	Wheel Code	Material	Color	Bearing
CKP01	Plate Type Fixed	Q235A	Zinc-plated	—	US	High Elasticity Polyurethane	Blue	Single Ball



Part Number		Wheel Code	H	F	t	A	B	C	C <sub>1</sub>	E	d	d <sub>1</sub>	Allowable Load (kg)	Reference Weight (kg)
Code	D													
CKP01	75	US	111	32	3	95	75	71	76	45	8.5	10.5	90	0.53
	100		105										1.17	
	125		150										1.75	

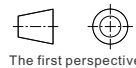
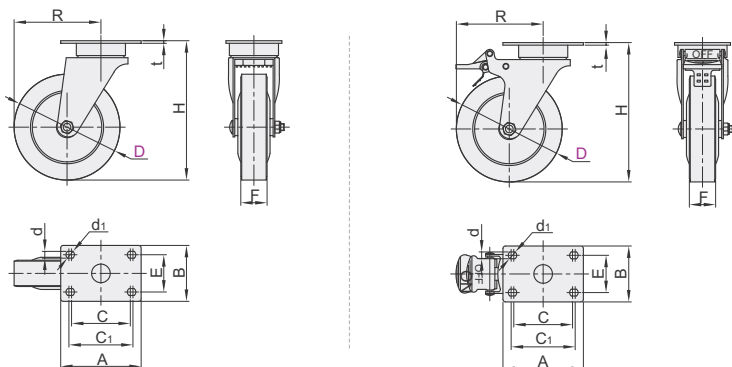
### Plate Type Swivel

Code	Bracket				Wheel			
	Type	Material	Surface Treatment	Stopper	Wheel Code	Material	Color	Bearing
CKP11	Plate Type Swivel	Q235A	Zinc-plated	—	US	High Elasticity Polyurethane	Blue	Single Ball
CKP12	Plate Type Swivel			Plastic Double Stopper				



No Stopper  
CKP11

Plastic Double Stopper  
CKP12



Part Number		Wheel Code	H	t	F	A	B	C	C <sub>1</sub>	E	d	d <sub>1</sub>	R	Allowable Load (kg)	Reference Weight(kg)	
Code	D														CKP11	CKP12
No Stopper CKP11	75	US	111	3	32	95	67	71	76	45	8.5	10.5	71	90	0.713	0.733
	100		85											105	0.8	0.847
Plastic Double Stopper CKP12	125	US	162.5	3	32	95	67	71	76	45	8.5	10.5	96	150	0.918	0.955

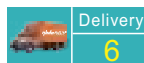
### Plate Type Swivel

Part Number		Wheel Code	H
Code	D		
CKP11	75	US	111
CKP12	100		137

CKP11 — D75 — US

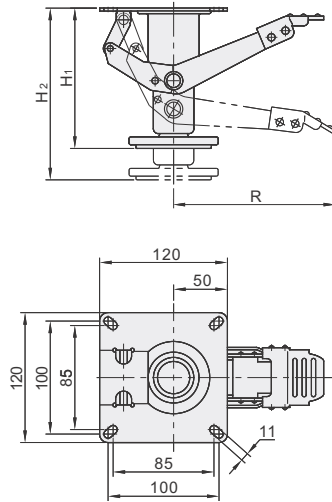


Discount price  
Per 1~19 20~  
Price 100% Additional quotation





Code	Type	Material		Surface Treatment	
		Main Body	Foot Pedal	Main Body	Foot Pedal
WAP01	Japanese Type	S45C	S45C	Electrophoresis(Green)	Zinc-plated



Part Number		Matching Wheels	Initial Height H <sub>1</sub>	Ascent Height H <sub>2</sub>	R	Load (kg)	Reference Weight (Kg/pcs)
Code	No.						
WAP01	4	100	125	150	155	200	1.6
	5	125	154	180			
	6	150	170	210	167	300	1.8
	8	200	215	255			



Part Number	Code	No.	Matching Wheels
WAP01	4	100	100
WAP01	5	125	125

WAP01 - 4

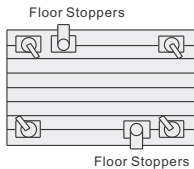


Discount price	
Per	1~19 20~
Price	100% Additional quotation



Delivery
6

### Recommended installation location of the floor stoppers



- ❗ Installation location recommended for the floor stoppers which equipped with 4 active casters.
- ❗ Installation location recommended for the floor stoppers which equipped with 2 active casters and 2 fixed casters.
- ❗ It is important to choose the right model of support bracket as the floor stoppers is designed only for horizontal ground, not for inclined ground. The floor stoppers can be operated by feet after installed, which is convenient and practical.

Code	Bracket				Wheel			
	Type	Material	Surface Treatment	Stopper	Code	Material	Color	Bearing
CXA01	Plate Type Swivel	ADC	Powder Coated	—	NJ	Nylon	Black	Bushing

① The wheel material of CXA01-150-NJ is MC nylon blue.

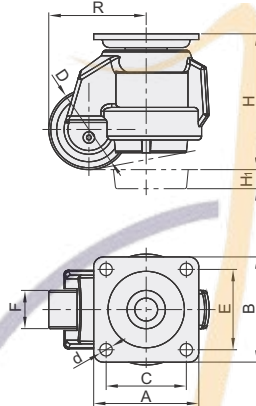
② Instructions :

- It is recommended that the load carrying capacity of the four wheels of Leveling Casters is twice that of a single load. After moving the equipment to the ideal position, adjust the block to contact ground.
- With mobile and fixed functions, not special for propelling equipment.

③ When moving the Leveling Casters, the supporting rubber base should be fully off the ground. If not followed, the screw will come off and the height cannot be adjusted when the rubber base touches the ground and moving.



Inventory



Part Number Code	No.	Wheel Code	D	H	H <sub>1</sub>	F	A	B	C	E	d	R	Allowable Load (kg)	Reference Weight (kg)
CXA01	40	NJ	39.5	71	10	18.5	55	55	42	42	6.5	51	50	0.4
	60		50	82	10	24	73	73	58	58	7	61	250	0.8
	80		62	102	16	27.5	90	90			9	77.5	500	1.4
	100		73	122	18	30	95	95	70	70	11	90.5	750	1.9
	120		96	132	15	56	100	100			13	117	1000	2.2
	150		96	132	15	56	100	100			13	117	1500	3.5



Part Number Code	No.	Wheel Code
CXA01	60	NJ
CXA01	80	NJ

CXA01-80-NJ



Discount price	
Per 1~19	20~
Price 100%	Additional quotation



Delivery
6

# Plate Type Swivel ▶

Medium-Heavy Load

# Casters with Leveling Mounts

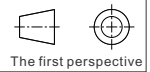
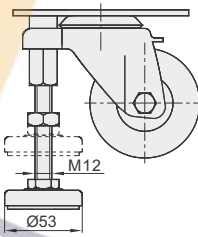
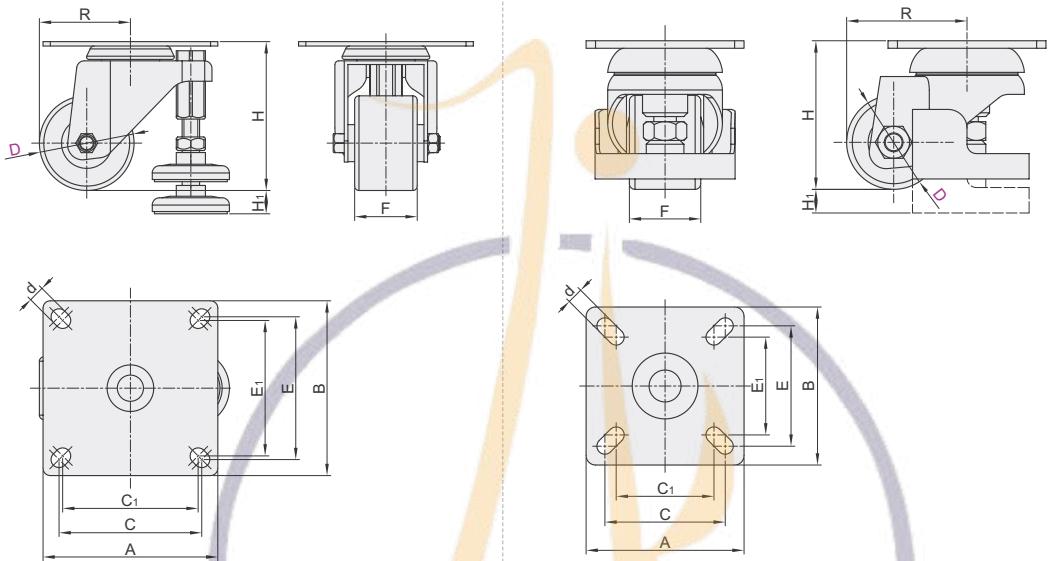
水平调节轮

Code	Bracket				Wheel			
	Type	Material	Surface Treatment	Stopper	Wheel Code	Material	Color	Bearing
<b>CGP01</b>	Plate Type Swivel	Q235A	Zinc-plated		<b>N</b>	Nylon	Black	Double Ball
<b>CLT01</b>			Electrophoresis (Black Paint)		<b>NE</b>	Nylon	Black	Double Ball



**CGP01**

**CLT01**



Part Number	Wheel Code	H	H <sub>1</sub>	F	A	B	C	C <sub>1</sub>	E	E <sub>1</sub>	d	R	Allowable Load (kg)	Reference Weight (kg)	
<b>CGP01</b>	<b>65</b>	N	97	15	41	120	120	98	93	98	93	11	62.5	150	1.24
	<b>75</b>	N	102	15	45	120	120	98	93	98	93	11	67.5	200	1.37
<b>CLT01</b>	<b>50</b>	NE	79	10	38	84	84	64	52	64	52	8.5	64	150	1.16



Part Number	Wheel Code	H	
<b>CGP01</b>	<b>65</b>	N	97
	<b>75</b>	N	102

**CGP01 — D65**

Part Number	Wheel Code	H	
<b>CLT01</b>	<b>50</b>	NE	79

**CLT01 — D50 — NE**



Per	1~19	20~
Price	100%	Additional quotation



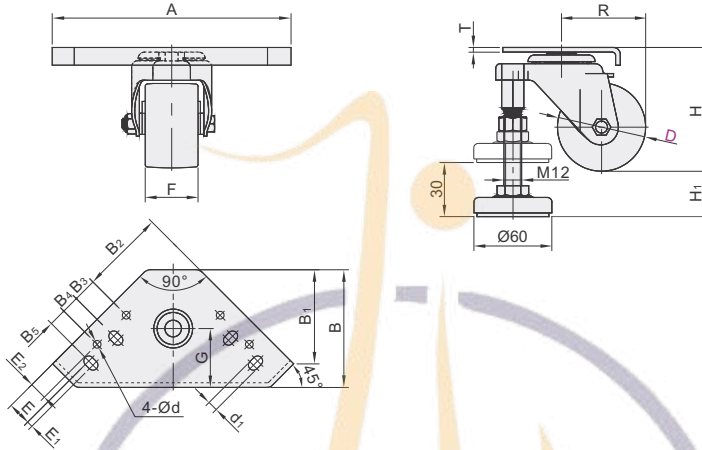
**Delivery**  
**6**

Code	Bracket				Wheel			
	Type	Material	Surface Treatment	Stopper	Wheel Code	Material	Color	Bearing
<b>CGP51</b>	Plate Type Swivel	Q235A	Zinc-plated		<b>N</b>	Nylon	Black	Double Ball
<b>CLT51</b>			Electrophoresis (Black Paint)		<b>NE</b>	Nylon	Black	Double Ball

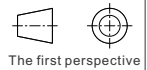
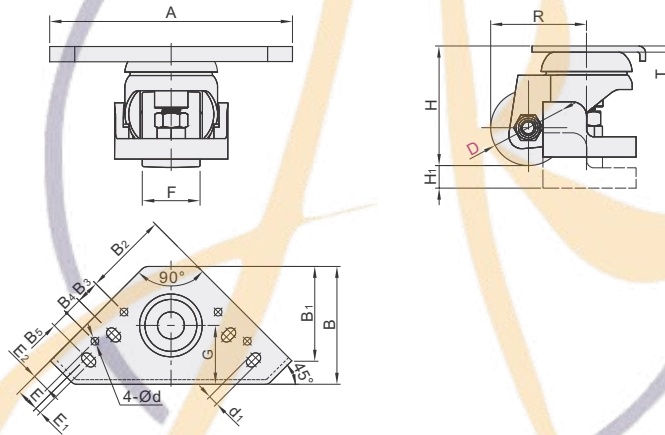


Inventory

**CGP51**



**CLT51**



Part Number	Wheel Code	H	H <sub>1</sub>	F	R	T	A	B	B <sub>1</sub>	B <sub>2</sub>	B <sub>3</sub>	B <sub>4</sub>	B <sub>5</sub>	E	E <sub>1</sub>	E <sub>2</sub>	d	d <sub>1</sub>	G	Applicable Aluminum Extrusions	Allowable Load (kg)	Reference Weight (kg)	
<b>CLT51</b>	<b>50</b>	<b>N</b>	79	6	38	64															GB30/40/45/50 OB30/40/45/50	150	1.07
<b>CGP51</b>	<b>65</b>	<b>NE</b>	97	25	43	62.5	4	205	100	80	71.5	20	15	15	20	5	15	6.5	8.5	50		200	1.5
	<b>75</b>		102	20	46																		



Part Number	Wheel Code	H	
<b>CLT51</b>	<b>50</b>	<b>N</b>	79
<b>CGP51</b>	<b>65</b>	<b>NE</b>	97

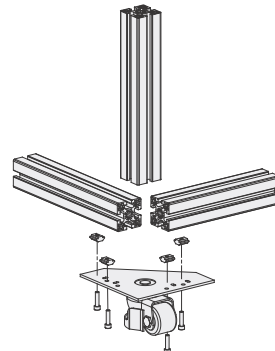
CLT51 — D50 — N



Discount price
Per 1~19
Price 100%
Additional quotation



Delivery  
**6**



# Casters with Integrated Plate and Adjustment Pads

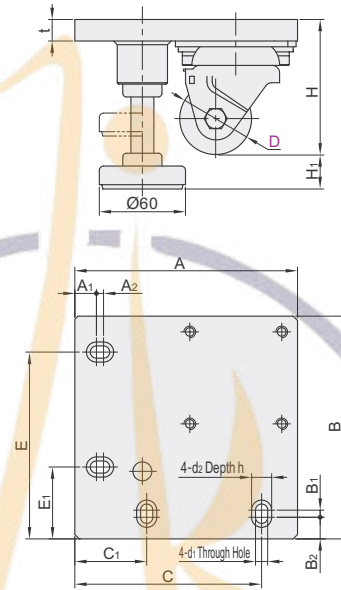
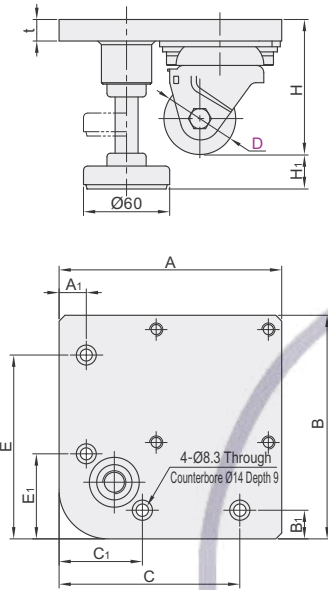
# For Aluminum Extrusions Heavy Load

Code	Bracket					Wheel				
	Mounting Plate			Caster Bracket						
	Type	Material	Surface Treatment	Material	Surface Treatment	Stopper	Wheel Code	Material	Color	Bearing
CGV01	Plate	Q235A	Baked Paint(Black)	Q235A	Electrophoresis (Black)	—	NE	Nylon	Black	Double Ball
CGV06	Swivel	Q235A	Baked Paint(White)	Q235A	Electrophoresis (Black)	—	NE	Nylon	Black	Double Ball



D: 50/65A

D: 50B/65



Part Number Code	D	Wheel Code	A	A1	A2	B	B1	B2	C	C1	E	E1
CGV01 CGV06	50	NE	125	—	—	125	15	—	100	55	100	55
	50B		155	15	5	155	5	15	130	55	130	55
	65		160	20	—	160	20	—	130	60	130	60
	65A		160	20	—	160	20	—	130	60	130	60

Part Number Code	D	H	H1	t	d1	d2	h	Applicable Aluminum Extrusions		Allowable Load (kg)	Reference Weight (kg)
								Chinese Standard	European Standard		
CGV01 CGV06	50	94	19	15	8.5	14	9	6630R	—	300	3.9
	50B							30/40/3060/4080	30/40/3060/4080		
	65	110	23					6060/8080	6060/8080	500	4.5
	65A							8840R	8840R		

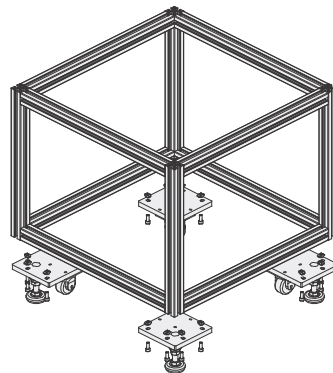
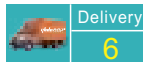


Part Number Code	D	Wheel Code
CGV01	50	NE
CGV06	50B	

CGV01 — D50B — NE

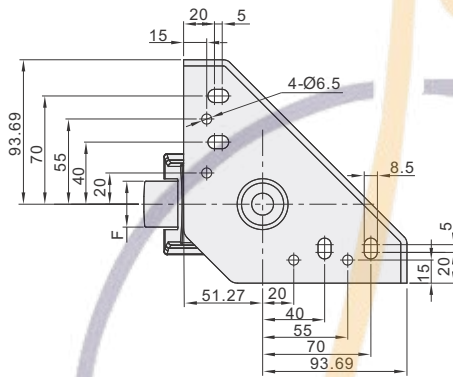
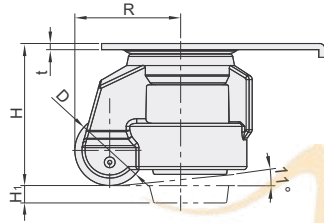


Discount price
Per 1~19 20~
Price 100% Additional Auction



Code	Bracket				Wheel		
	Type	Material	Surface Treatment	Stopper	Wheel Code	Material	Color
CGT01	Plate Type Swivel	Q235A	Spray Paint (White)	—	N	Nylon	Black

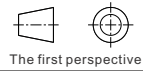
Inventory



**Instructions :**

- It is recommended that the load carrying capacity of the four wheels of Leveling Casters is twice that of a single load. After moving the equipment to the ideal position, adjust the block to contact ground.
- With mobile and fixed functions, not special for propelling equipment.

- When moving the Leveling Casters, the supporting rubber base should be fully off the ground. If not followed, the screw will come off and the height cannot be adjusted when the rubber base touches the ground and moving.



The first perspective

No. 60 has no 4-Ø6.5 mounting holes.

Part Number Code	No.	Wheel Code	D	H	H <sub>1</sub>	R	t	F	Applicable Aluminum Extrusions		Allowable Load (kg)	Reference Weight (kg)
									European Standard	Chinese Standard		
CGT01	50	N	50	82	10	61	4	25	30/40/45/50		250	0.9
	60		61.5	103	16	77.5	4	29	40/45/50		500	1.3



Please order as shown

Part Number Code	No.	Wheel Code	D
CGT01	50	N	50
CGT01	60	N	61.5

CGT01 — 60 — N



Example



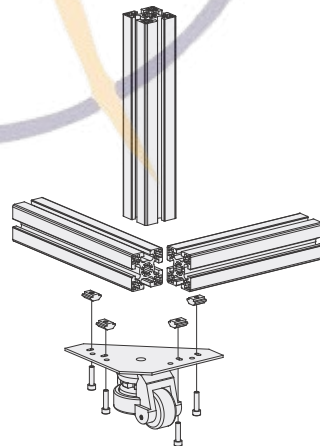
Discount price

Per Price	1~19	20~
Price	100%	Additional quotation



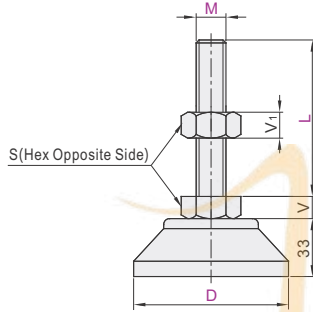
Delivery

6

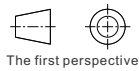


Code	Type	Material		Surface Treatment
		Bolt	Base	
WAD21	Nylon Base	S45C	Nylon (PA6-GF25)	Zinc-plated

Application: automated machinery, aluminum extrusion equipment, conveying equipment.



Inventory self made



Part Number		M	L	S	V	V <sub>1</sub>	Vertical Load Capacity (Kg)	Reference Weight (Kg/pcs)
Code	D							
WAD21	65	12	50	19	8	10	400	0.18
			75					0.19
			100					0.21
			125					0.3
	16	75	24	10	13	600	0.32	
		100					0.28	
		125					0.3	
		150					0.32	
	80	12	50	19	8	10	400	0.38
			75					0.2
			100					0.22
			125					0.26
		16	150	24	10	13	600	0.28
			75					0.33
			100					0.35
			125					0.41
20	150	30	13	16	800	0.47		
	100					0.49		
	125					0.47		
	150					0.57		



Part Number	Code	D	M	L	S
WAD21	65	12	75	19	

WAD21-D65-M12-L75

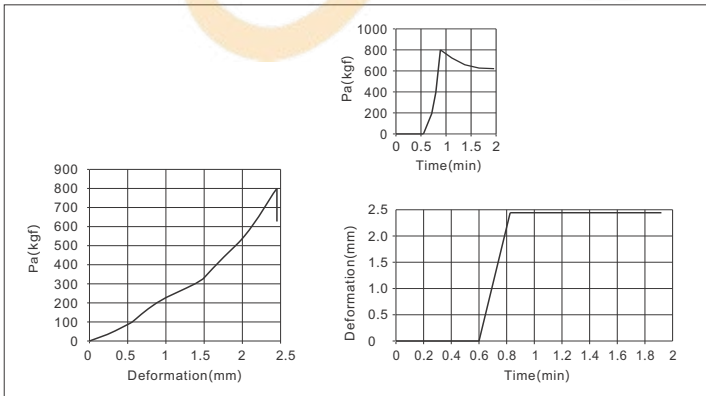


Discount price  
Per 1~19 20~  
Price 100% Additional quotation



Delivery  
6

Bearing capacity test (Test Part Number : WAD21-D80-M20-L125)





# Leveling Mounts

## Fixed, Stainless Steel Type Heavy Load

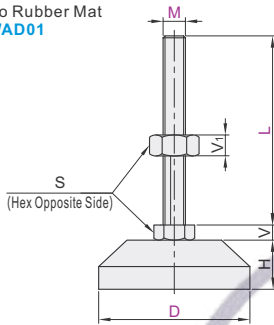
Code	Type		Material			Surface Treatment
			Base	Bolt	Rubber Mat	
WAD01	Fixed	No Rubber Mat	SUS304	SUS304	—	—
WAD06		With Rubber Mat			Nitrile Rubber(NBR)	

☑ Stainless steel type features: large load capacity.

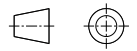
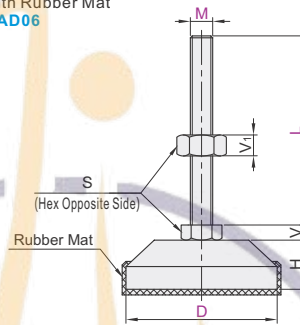


Inventory self made

No Rubber Mat  
WAD01



With Rubber Mat  
WAD06



The first perspective

Part Number		M	L	S	H	V	V1	Vertical Load Capacity (Kg)	Reference Weight (Kg/pcs)	
Code	D									
No Rubber Mat WAD01	80	12	50	19	26	8	10	350	0.78	
		14	100					400	0.82	
	With Rubber Mat WAD06	80	14	50		22	9	11	1200	0.69
			16	100					1200	0.82
		20	16	50		30	10	13	1800	0.88
			14	100						1200
24	16		50	36	13		16	0.87		
	14		100					1800		1.01
24	20	16	50	30	13	16	1800	0.93		
		14	100				1800	0.97		
	24	16	50		36	16	19	2200	1.2	
		14	100					2200	1.23	
24	24	16	50	36	16	19	2200	1.13		
		14	100				2200	1.28		
24	24	16	100	36	16	19	2200	1.41		
		14	100				2200	1.41		



Please order as shown

Part Number	Code	D	M	L	S
WAD01	WAD01	80	12	50	19
WAD06	WAD06	80	14	100	19

WAD01—D80—M12—L50



● Discount price  
Per 1~9 10~  
Price 100% Additional quotation

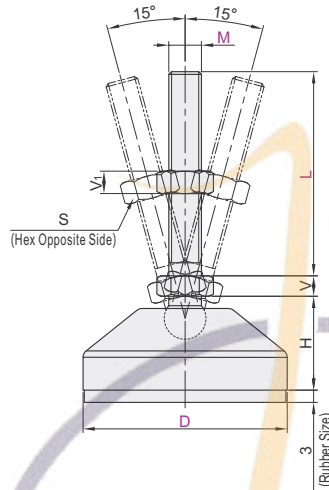


Delivery  
6

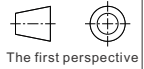
# Swivel, with Rubber Mat Base ▶ Light Load

## Leveling Mounts

Code	Type	Material			Surface Treatment	
		Bolt	Base	Rubber Mat	Bolt	Base
<b>WAR41</b>	With Rubber Mat Base	S45C	PA6	NBR	Zinc-plated	Black



Inventory self made



Part Number		M	L	S	H	V	V <sub>1</sub>	Load (Kg)	Reference Weight (Kg/pcs)
Code	D								
<b>WAR41</b>	50	8	50	14	23	7	8	120	0.076
			75						0.086
		100	0.119						
	12	100	19	8	10	0.189	0.224	0.29	0.309
		150	0.151						
	60	16	24	27	10	13	150	0.428	0.467
		20	150	0.428					

Part Number		M	L	S	H	V	V <sub>1</sub>	Load (Kg)	Reference Weight (Kg/pcs)
Code	D								
<b>WAR41</b>	70	12	100	19	27	10	13	300	0.186
			150						0.221
		16	100	0.288					
	20	100	30	13	16	0.425	0.526	0.229	0.264
		150	0.264						
	80	16	24	28	10	13	600	0.33	0.349
		20	150	0.349					



Please order as shown

Part Number		M	L
Code	D		
<b>WAR41</b>	<b>D50</b>	<b>M8</b>	<b>L50</b>



Discount price	
Per	Price
1~9	100%
10~	Additional Quotation



Delivery	
Per	Price
1~9	6
10~	Additional Quotation

Swivel, Reinforced Polyacetal Base ▶  
Swivel, Metal Base ▶  
Medium-Light Load

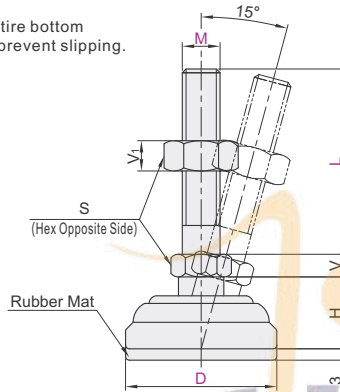
# Leveling Mounts

Reinforced Polyacetal Base

Code	Type		Material			Surface Treatment
			Bolt	Rubber Mat	Base	Bolt
WAG51	Reinforced Polyacetal Base	With Rubber Mat	S45C	Nitrile Rubber (NBR)	Reinforced Polyacetal (POM)	Zinc-plated
WAG56	Polyacetal Base		SUS304			—

Features

- Rubber-type Base can make the entire bottom surface contact with the ground to prevent slipping.
- It can be tilted in 360° direction.



Inventory self made



The first perspective

Part Number Code	M	L	V	V <sub>1</sub>	H	S	Load (Kg)	Reference Weight (Kg/pcs)		
WAG51 (S45C)	40	70	6	8	19	17	300	0.076		
		100						0.079		
		12	7.5	10	20	19		0.108		
	WAG56 (SUS304)	50	70	10	13	24	19	600	0.130	
			100						0.182	
			10	6	8	20	17		0.185	
		WAG56 (SUS304)	50	60	7.5	10	21.5	19	600	0.200
				70						0.210
				100	0.220					
			60	80	10	13	24	24	600	0.265
				130						0.280
				12	7.5	10	19	0.260		
60			70	10	13	26	24	600	0.265	
			100						0.290	
			150	0.295						
60	150	12.5	16	27	30	600	0.300			
	100						0.320			
	20	150	0.342							
		180					600	0.356		



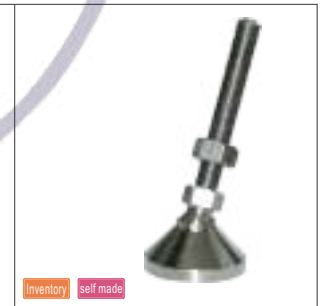
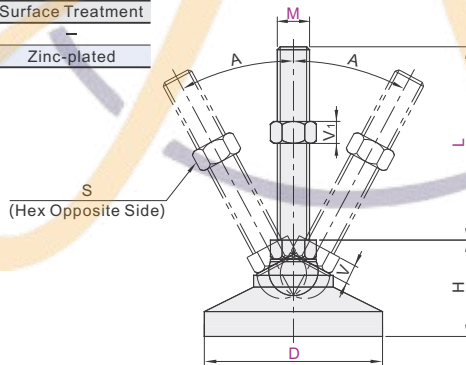
Part Number Code	D	M	L
WAG51	D40	M10	L70

WAG51—D40—M10—L70

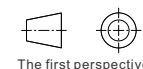
Discount price	Per	1~9	10~
Price	100%	Additional quotation	

Metal Base

Code	Type	Material	Surface Treatment
WAG41	Swivel	SUS304	—
WAG46		S45C	Zinc-plated



Inventory self made



The first perspective

Part Number Code	D	M	L	S	V	V <sub>1</sub>	H	A	Load (Kg)	Reference Weight (Kg/pcs)	
WAG41 (SUS304)	50	12	100	19	8	10	48	20°	300	0.28	
			125							0.31	
			150	0.35							
		60	16	125	24	10			13	500	0.29
				150							0.32
				100	0.36						
	WAG46 (S45C)	60	16	125	24	10	13	500	50	1000	0.3
				150							0.4
				100	0.49						
		75	16	125	24	10	13	1500	25°	1500	0.56
				150							0.6
				100	0.5						
75	20	125	30	13	16	1500	25°	1500	0.57		
		150							0.62		



Part Number Code	D	M	L	S
WAG41	D50	M12	L100	19
WAG46	D60	M12	L125	19

WAG41—D50—M12—L100

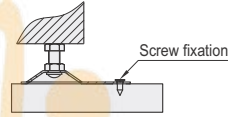
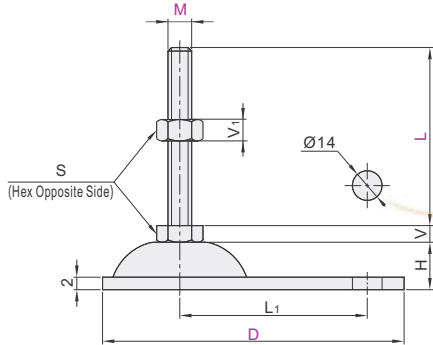
Discount price	Per	1~9	10~
Price	100%	Additional quotation	

# Leveling Mounts

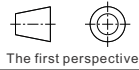
## Fixed • Drop Shape Light Load

Code	Type	Material		Surface Treatment
		Bolt	Bottom	
WAN01	Drop Shape	S45C	SPCC	Zinc-plated
WAN16		SUS304	SUS304	—

Application: Suitable for conveying machinery and equipment.



Inventory self made



Part Number		M	L	L <sub>1</sub>	S	H	V	V <sub>1</sub>	Load (Kg)	Reference Weight (Kg/pcs)		
Code	D											
WAN01 (S45C)	100	12	50	52	19	13	8	10	200	0.14		
			75							0.16		
			100							0.17		
		16	125		0.18							
			150		0.21							
			50		0.15							
	115	12	100	69	19	14	8	10	200	0.17		
			125							0.18		
			150							0.19		
		16	50		24	10	13	300		0.22		
			75							0.16		
			100							0.21		
WAN16 (SUS304)	100	12	100	52		19	13		8	10	200	0.23
			125									0.24
			150									0.26
	115	16	50		69	19	14	8	10	200		0.2
			75									0.26
			100									0.26
100	16	125	52	24		10	13	300	0.3			
		150							0.33			
		50							0.36			



Please order as shown

Part Number	M	L
Code	D	
WAN01	100	125
WAN01-D100-M12-L50		

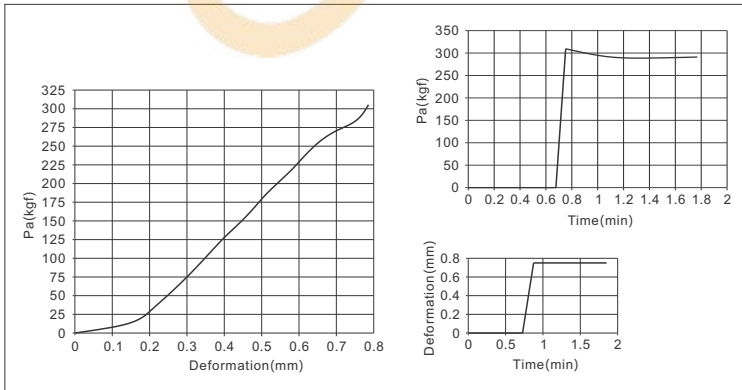


Discount price	Per	1~9	10~
Price	100%	Additional	Quotation



Delivery
6

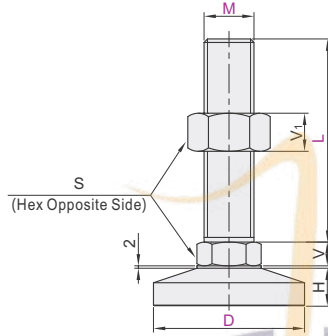
Bearing capacity test (Test Part Number : WAN01-D100-M16-L150)



Code	Type	Material	Surface Treatment
WAD51	Fixed	SUS304	Electrolytic Polishing

☑ Features

- With anti-carton function
  - Built-in bearing makes leveling easy and smooth.
- ⚠ With thrust bearings and PV Pad.



Part Number		M	L	S	H	V	V <sub>1</sub>	Load (kg)	Reference Weight (kg/pcs)
Code	D								
WAD51	100	16	100	24	36.5	10	13	1500	0.44
			125						0.48
			150						0.54
		20	100	30		13	16	2000	0.46
			125						0.50
			150						0.54
	24	100	36	13	19	3500	0.51		
							125	0.59	
							150	0.65	
			200					0.75	



Part Number		M	L	S
Code	D			
WAD51	D100	M16	L100	24

WAD51—D100—M16—L100



Discount price		
Per	1~9	10~
Price	100%	Additional quotation

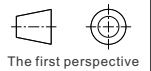
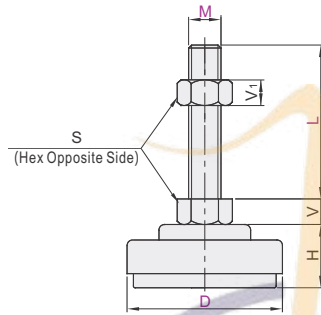


Delivery	
	6

Code	Type	Material			Hardness	Surface Treatment	
		Bottom Shell	Bolt	Bottom	Bottom	Bottom Shell	Bolt
WAK02	Metal + Rubber Base	SPPC	S45C	Nitrile Rubber (NBR)	Shore A70~75	Zinc-plated	—
WAK06		SUS304	SUS304				

☑ Features

- Good shockproof performance.
- The shaft is a integrated processing type, with excellent coaxial resistance and impact resistance.



Part Number		M	L	S	H	V	V <sub>1</sub>	Load (Kg)	Reference Weight (Kg/pcs)	
Code	D									
WAK02 WAK06	40	10	50	17	19	7	8	200	0.09	
			75						0.11	
			100						0.13	
		12	50	19		8	10		300	0.12
			75							0.15
			100							0.16
	60	12	125	19	21	8	10	300	0.17	
			150						0.19	
			50						19	8
		75	0.22							
		100	0.24							
		80	16	125		24	23		10	13
	150			0.27						
	50			19	8			10		
	75		0.29							
	100		0.29							
	16		12	125	24	10		13	13	500
		150		0.33						
50		19		8			10			
75			0.35							
100			0.38							



Please order as shown

Part Number	D	M	L	S
WAK02	40	10	100	24
WAK06	40	10	100	24

WAK02 - D80 - M16 - L75



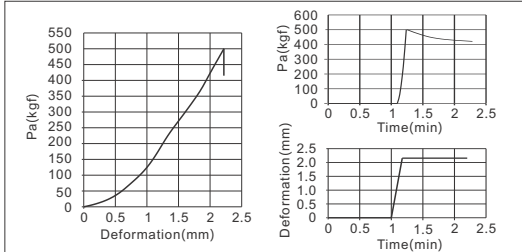
Discount price

Per	1~9	10~
Price	100%	Additional quotation



Delivery  
6

☑ Bearing capacity test (Test Part Number : WAK02-D80-M16-L100)



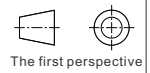
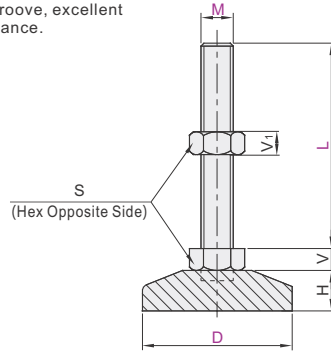
# Antivibration Leveling Mounts

## Fixed, Rubber Base Heavy Load

Code	Type	Material		Surface Treatment
		Bolt	Bottom	Bolt
WAL22	Rubber Base	S45C	Rubber	Zinc-plated
WAL26		SUS304		—

**Heavy Load features**

- Bottom Rubber has an anti-skid groove, excellent anti-skid and shockproof performance.



The first perspective

Part Number	Code	D	M	L	H	S	V	V <sub>1</sub>	Load(Kg)		Reference Weight (Kg/pcs)
									S45C	SUS304	
WAL22	40	8	16	50	14	6	6	300	350	0.16	
				75						0.17	
				100						0.18	
				125						0.19	
				50						0.19	
				75						0.2	
	60	12	19	8	10	450	500	0.21			
								125	0.22		
								150	0.23		
		20	25	19	8	10	600	650	0.24		
									75	0.25	
									100	0.26	
WAL26	16	24	10	13	700	750	0.27				
							125	0.28			
							150	0.3			
							75	0.31			
							100	0.32			
							150	0.35			
	80	16	24	10	13	800	850	0.55			
								100	0.57		
								125	0.59		
		20	30	24	10	13	850	900	0.61		
									75	0.62	
									100	0.64	
										0.66	
										0.68	

Part Number	Code	D	M	L	H	S	V	V <sub>1</sub>	Load(Kg)		Reference Weight (Kg/pcs)
									S45C	SUS304	
WAL22	16	24	10	13	800	850	0.9				
							100	0.92			
							125	0.95			
							150	0.97			
							75	1.04			
							100	1.1			
	20	35	30	13	16	900	950	1.15			
								125	1.18		
								150	1.31		
		24	36	16	19	950	1000	1.42			
								125	1.53		
								150	1.61		
120	20	30	13	16	1000	1050	1.63				
							100	1.68			
							125	1.74			
	24	40	36	16	19	1050	1100	1.8			
								150	1.88		
								200	1.91		



Please order as shown.

Part Number	Code	D	M	L	H
WAL22	40	8	16	50	16
WAL26	16	24	10	75	16

WAL22—D40—M8—L50



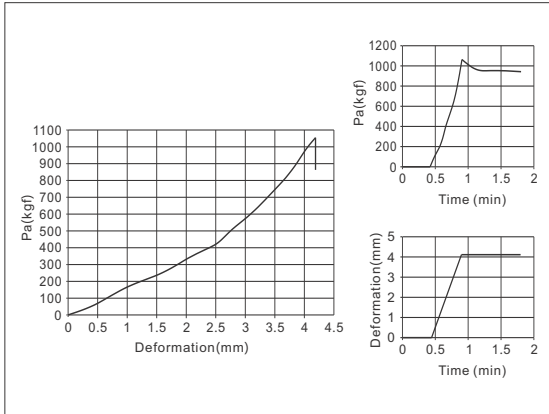
Discount price  
 Per 1~9 10~  
 Price 100% Additional quotation



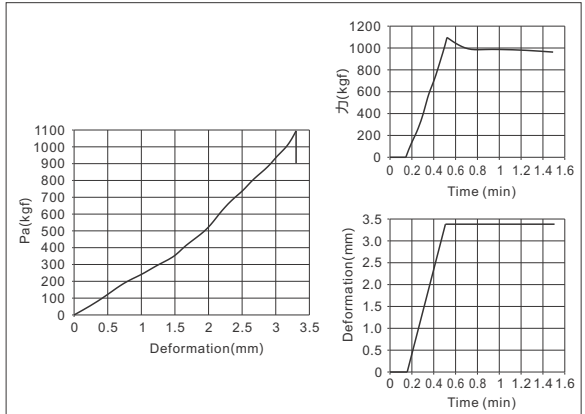
Delivery  
 6

**Bearing capacity test**

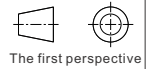
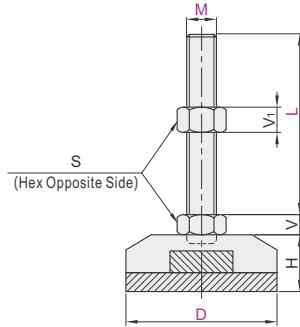
(Test Part Number : WAL22-D120-M20-L125)



(Test Part Number : WAL26-D80-M20-L100)



Code	Type	Material			Surface Treatment	
		Bottom Shell	Bolt	Bottom	Bottom Shell	Bolt
WAL01	Metal + Rubber Base	S45C	S45C	Rubber	Zinc-plated	Zinc-plated
WAL02					Electrophoresis(Black)	Electrophoresis(Black)
WAL06					—	—



Part Number Code	D	M	L	H	S	V	V <sub>1</sub>	Load(kg)		Reference Weight (kg/pcs)
								S45C	SUS304	
WAL01 WAL02 WAL06	40	8	50	17	14	6	6	300	350	0.19
			75							0.20
			100							0.22
		125	0.23							
		50	0.22							
		75	0.23							
	60	12	100	24	19	8	10	450	500	0.24
			125							0.25
			150							0.26
		50	0.49							
		75	0.52							
		100	0.53							
80	16	125	24	24	10	13	700	750	0.51	
		150							0.53	
		75							0.54	
	100	0.53								
	125	0.54								
	150	0.55								
100	20	100	32	30	13	16	850	900	0.55	
		125							0.56	
		150							0.56	
	75	0.72								
	100	0.74								
	125	0.76								
120	24	150	34	36	16	19	950	1000	0.88	
		200							0.91	
		75							0.92	
	100	0.95								
	125	0.98								
	150	1.10								
100	20	100	32	30	13	16	900	950	0.82	
		125							0.84	
		150							0.86	
	75	0.88								
	100	0.91								
	125	0.93								
100	24	100	32	30	13	16	1000	1050	0.97	
		125							0.99	
		150							1.11	
	75	1.10								
	100	1.11								
	125	1.24								
100	24	125	34	36	16	19	1050	1100	1.24	
		150							1.33	
		200							1.42	
	75	0.86								
	100	0.88								
	125	0.91								

Part Number Code	D	M	L	S	H	V	V <sub>1</sub>	Load (kg)	Reference Weight (kg/pcs)
WAL02	8	75	14	6	6	350	0.44		
WAL06	8	100	14	6	6	350	0.45		
WAL01	10	50	17	7	8	350	0.46		
WAL02	10	75	17	7	8	350	0.46		
WAL06	10	100	17	7	8	350	0.47		
WAL01	12	50	19	8	10	500	0.48		
WAL02	12	75	19	8	10	500	0.49		
WAL06	12	100	19	8	10	500	0.51		
WAL01	16	75	24	10	13	700	0.52		
WAL02	16	100	24	10	13	700	0.52		
WAL06	16	125	24	10	13	700	0.53		
WAL01	20	100	30	13	16	850	0.54		
WAL02	20	125	30	13	16	850	0.55		
WAL06	20	150	30	13	16	850	0.56		
WAL01	24	100	36	16	19	950	0.67		
WAL02	24	125	36	16	19	950	0.68		
WAL06	24	150	36	16	19	950	0.69		
WAL01	30	75	42	21	24	1100	0.70		
WAL02	30	100	42	21	24	1100	0.71		
WAL06	30	125	42	21	24	1100	0.72		
WAL01	40	100	50	25	30	1400	0.74		
WAL02	40	125	50	25	30	1400	0.74		
WAL06	40	150	50	25	30	1400	0.74		



Part Number	D	M	L	H
WAL01	D40	M8	L50	H17
WAL02	D40	M8	L75	H17
WAL06	D40	M8	L100	H17

WAL01—D40—M8—L50

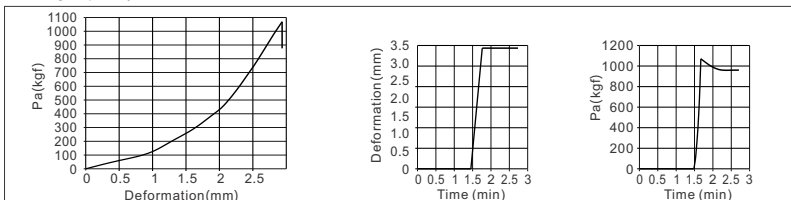


Discount price
Per 1~9 10~
Price 100% Additional



Delivery
6

☑ Bearing capacity test (Test Part Number : WAL01-D120-M24-L125)

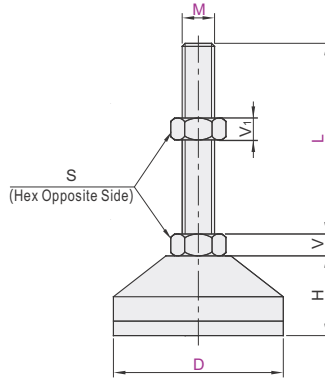




# Antivibration Leveling Mounts

Fixed, Metal + Rubber Base  
Extra Heavy Load

Code	Type	Material			Surface Treatment	
		Bottom Shell	Bolt	Bottom	Bottom Shell	Bolt
WAM03	Metal + Rubber Base	S45C	S45C	Rubber	Zinc-plated	Zinc-plated
WAM06		SUS304	SUS304		—	—



The first perspective

Part Number		M	L	S	H	V	V <sub>1</sub>	Load(Kg)	Reference Weight (Kg/pcs)
Code	D								
WAM03 WAM06	100	20	100	30	41	16	19	2000	0.5
			125						0.57
			150						0.64
			200						0.71
			250						0.78
			100						0.6
	100	24	125	36	41	16	19	3000	0.69
			150						0.78
			200						0.87
			250						0.91
			100						0.61
			150						0.7
100	30	200	46	41	24	24	5000	0.76	
								250	0.83
								300	0.95



Part Number	D	M	L	S
WAM03	100	20	125	30

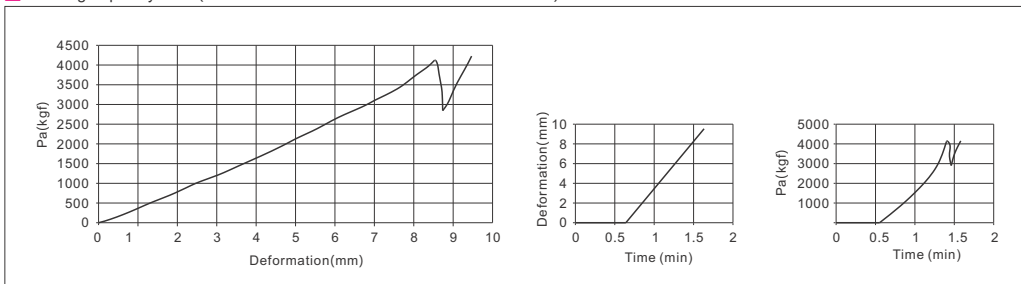
WAM03—D100—M20—L100



Discount price	
Per	1~9 10~
Price	100% Additional quotation



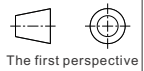
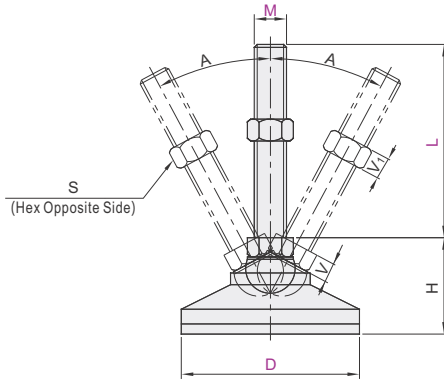
☑ Bearing capacity test (Test Part Number : WAM03-D100-M30-L200)



# Swivel, Rubber Base ▶ Extra Heavy Load

## Antivibration Leveling Mounts

Code	Type	Material			Surface Treatment	
		Bottom Shell	Bolt	Bottom	Bottom Shell	Bolt
WAG71	Rubber Base	SUS304	SUS304	Rubber	—	—
WAG73		S45C	S45C		Zinc-plated	Zinc-plated



Part Number		M	L	S	V	V <sub>1</sub>	H	A	Load (Kg)	Reference Weight (Kg/pcs)
Code	D									
WAG71 WAG73	100		100						2000	0.64
			125					0.67		
		20	150	30	13	16		0.7		
			200					0.74		
			250					0.8		
			100					62		30°
		24		125					4000	0.74
			150	36	16	19		0.78		
			200					0.82		
			250					0.88		



Part Number		M	L	S
Code	D			
WAG71	100	20	100	30
			150	

WAG71—D100—M20—L100



Discount price			
Per	1~9	10~	Additional quotation
Price	100%		

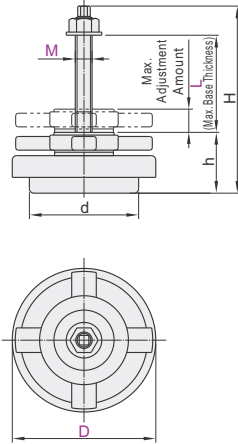


Delivery
6

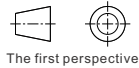
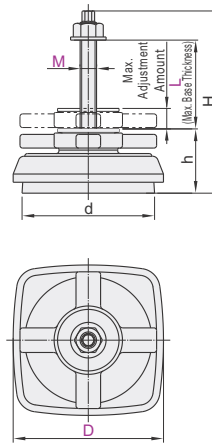
Code	Type		Load	Material			Surface Treatment		Hardness
				Bottom Shell	Bolt	Bottom	Bottom Shell	Bolt	Bottom
WAM04	Regulating	Round	Heavy Load	HT200	S45C	Nitrile Rubber (NBR)	Baked Melamine Finish (Black)	Zinc-plated	—
WAM08	Type	Square							



Round WAM04



Square WAM08



Part Number		M	L	H	h	d	Max. Adjustable Amount	Vertical Load (kg)	Reference Weight (kg/pcs)
Code	D								
Round WAM04	100	12	75	147	50	80	25	200	1.7
			100	172					
			175	247					
	140	16	75	152	52	120	28	600	3.2
			100	177					
			175	252					
190	20	100	183	55	160	32	900	4.8	
		175	258						
		200	279						
Square WAM08	110	12	75	144	47	100	15	150	2.0
			175	244					
	130	16	100	176	51	115	20	280	3.3
			175	251					
			200	265					
	160	20	100	190	65	150	24	600	4.2
			175	265					
			200	204					
200	20	100	204	76	185	27	1200	6.0	
		175	279						



Part Number	M	L
Code D		75
WAMD4 <100>	<12>	<100>

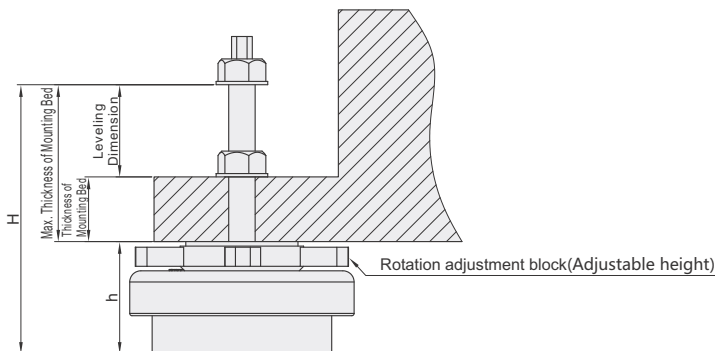
WAM04 — D100 — M12 — L100



Discount price		
Per	1~9	10~
Price	100%	Additional quotation

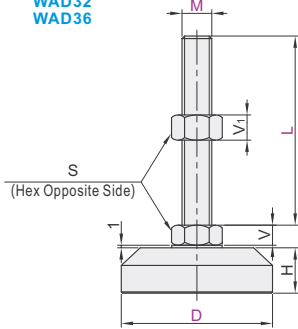


Delivery
6

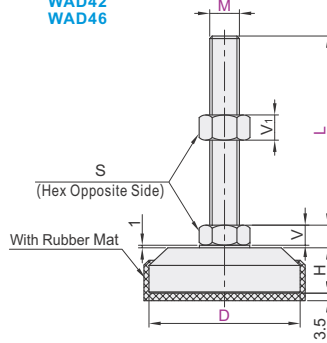


Code	Type	Material			Surface Treatment	
		Base	Bolt	Rubber Mat	Base	Bolt
WAD31	Fixed	No Rubber Mat	S45C	S45C	—	Electrophoresis(Black)
WAD32			SUS304	SUS304	—	Zinc-plated
WAD36			SUS304	SUS304	—	Zinc-plated
WAD41	Fixed	With Rubber Mat	S45C	S45C	Nitrile Rubber (NBR)	Electrophoresis(Black)
WAD42			SUS304	SUS304	Nitrile Rubber (NBR)	Zinc-plated
WAD46			SUS304	SUS304	Nitrile Rubber (NBR)	Zinc-plated

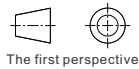
No Rubber Mat  
WAD31  
WAD32  
WAD36



With Rubber Mat  
WAD41  
WAD42  
WAD46



Inventory self made



The first perspective

Part Number Code	D	M	L	H	S	V	V <sub>1</sub>	Load(kg)		Reference Weight (kg/pcs)
								S45C	SUS304	
No Rubber Mat WAD31 WAD32 WAD36	40	8	50	15	14	6	6	300	350	0.20
			75							0.20
			100							0.21
		125	0.22							
		50	0.22							
		75	0.23							
	60	12	100	18	19	8	10	450	500	0.24
			125							0.25
			150							0.26
		50	0.45							
		75	0.46							
		100	0.47							
No Rubber Mat WAD31 WAD32 WAD36	80	16	100	23	24	10	13	800	850	0.48
			125							0.49
			150							0.49
		75	0.45							
		100	0.47							
		125	0.49							
	with Rubber Mat WAD41 WAD42 WAD46	20	100	26	30	13	16	850	900	0.51
			125							0.76
			150							0.78
		75	0.80							
		100	0.82							
		125	0.89							
with Rubber Mat WAD41 WAD42 WAD46	100	16	100	26	24	10	13	800	850	1.23
			125							1.25
			150							1.27
		75	1.29							
		100	1.32							
		125	1.35							
	120	20	100	29	30	13	16	900	950	1.38
			125							1.42
			150							1.42
		100	1.93							
		125	1.98							
		150	2.03							
No Rubber Mat WAD31 WAD32 WAD36	24	100	36	36	16	19	950	1000	2.15	
		125							2.11	
		150							2.14	
	200	2.17								
	75	2.22								
	100	2.14								
No Rubber Mat WAD31 WAD32 WAD36	24	100	36	36	16	19	1050	1100	2.17	
		125							2.17	
		150							2.20	
	200	2.25								
	75	2.11								
	100	2.14								



Please order as shown

Part Number	Code	D	M	L	H
WAD32	40	8	50	15	
WAD36	40	8	75	15	

WAD32— D40 — M8 — L50



Discount price	Per	Price	
		1~9	10~
100%	Additional quotation		

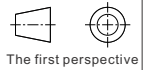
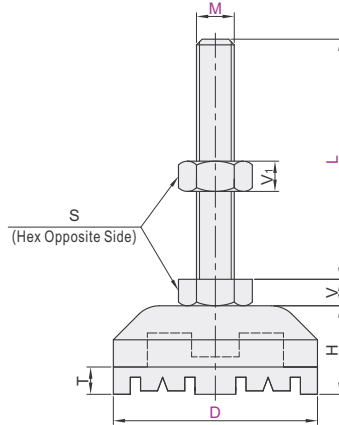


Delivery  
6

# Antivibration, Non-Slip Leveling Mounts

Fixed Heavy Load

Code	Type	Material			Surface Treatment	
		Bottom Shell	Bolt	Base	Bottom Shell	Bolt
WAD86	Metal + Rubber Base	S45C		NBR	Zinc-plated	
WAD87				CR(Gray)		



Part Number		M	L	S	H	T	V	V <sub>1</sub>	Load (kg)	Reference Weight (kg/pcs)
Code	D									
WAD86 WAD87	60	10	75	17	26	8	7	8	700	0.32
			100							0.33
		12	75	19			0.34			
			100				0.36			
		16	125	24			0.38			
			150				0.40			
	60	10	75	17	26	8	7	8	700	0.44
			100							0.45
		12	125	19			0.51			
			150				0.54			
		16	200	24			0.57			



Part Number		M	L	S
Code	D			
WAD86	60	10	100	24
WAD87	60	125		

WAD86—D60—M16—L100



Discount price		
Per	1~9	10~
Price	100%	Additional acquisition

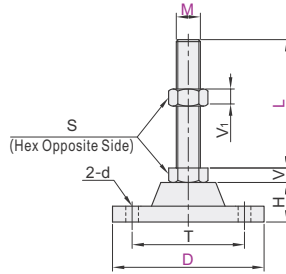


Delivery	
	6

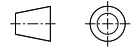
# Fixed, with Dowel Hole ▶ Heavy Load

# Economical Leveling Mounts

Code	Type		Material	Surface Treatment
E-WAB01	Fixed	with Dowel Hole	S45C	Zinc-plated



Inventory self made



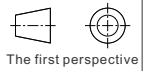
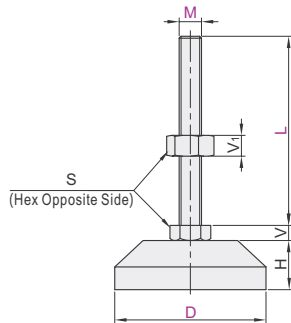
The first perspective

Part Number		M	L	S	H	T	V	V <sub>1</sub>	d	Load(Kg)	Reference Weight (Kg/pcs)										
Code	D																				
E-WAB01	16	50	24	10	13	1700	0.72	0.74	0.76	0.76	0.78										
												80	20	50	30	57	13	16	10	2000	0.8
	16	50	24	10	13	2400	1.19	1.21													
									100	20	50	30	76	13	16	2700	1.23				
																		24	100	36	20
	16	50	24	10	13	3000	1.27	1.29													
									120	20	50	30	100	13	16	3500	1.27				
																		24	100	36	16
	16	50	24	10	13	12	3000	1.33													
									100	20	50	30	100	13	16	3500	1.33				
																		24	100	36	20
	16	50	24	10	13	12	3000	1.33													
									120	20	50	30	100	13	16	3500	1.33				
																		24	100	36	20
	16	50	24	10	13	12	3000	1.33													
									100	20	50	30	100	13	16	3500	1.33				
																		24	100	36	20
	16	50	24	10	13	12	3000	1.33													
									120	20	50	30	100	13	16	3500	1.33				
																		24	100	36	20
	16	50	24	10	13	12	3000	1.33													
									100	20	50	30	100	13	16	3500	1.33				
																		24	100	36	20
	16	50	24	10	13	12	3000	1.33													
									120	20	50	30	100	13	16	3500	1.33				
																		24	100	36	20
	16	50	24	10	13	12	3000	1.33													
									100	20	50	30	100	13	16	3500	1.33				
																		24	100	36	20
16	50	24	10	13	12	3000	1.33														
								120	20	50	30	100	13	16	3500	1.33					
																	24	100	36	20	16
16	50	24	10	13	12	3000	1.33														
								100	20	50	30	100	13	16	3500	1.33					
																	24	100	36	20	16
16	50	24	10	13	12	3000	1.33														
								120	20	50	30	100	13	16	3500	1.33					
																	24	100	36	20	16
16	50	24	10	13	12	3000	1.33														
								100	20	50	30	100	13	16	3500	1.33					
																	24	100	36	20	16
16	50	24	10	13	12	3000	1.33														
								120	20	50	30	100	13	16	3500	1.33					
																	24	100	36	20	16
16	50	24	10	13	12	3000	1.33														
								100	20	50	30	100	13	16	3500	1.33					
																	24	100	36	20	16
16	50	24	10	13	12	3000	1.33														
								120	20	50	30	100	13	16	3500	1.33					
																	24	100	36	20	16
16	50	24	10	13	12	3000	1.33														
								100	20	50	30	100	13	16	3500	1.33					
																	24	100	36	20	16
16	50	24	10	13	12	3000	1.33														
								120	20	50	30	100	13	16	3500	1.33					
																	24	100	36	20	16
16	50	24	10	13	12	3000	1.33														
								100	20	50	30	100	13	16	3500	1.33					
																	24	100	36	20	16
16	50	24	10	13	12	3000	1.33														
								120	20	50	30	100	13	16	3500	1.33					
																	24	100	36	20	16
16	50	24	10	13	12	3000	1.33														
								100	20	50	30	100	13	16	3500	1.33					
																	24	100	36	20	16
16	50	24	10	13	12	3000	1.33														
								120	20	50	30	100	13	16	3500	1.33					
																	24	100	36	20	16
16	50	24	10	13	12	3000	1.33														
								100	20	50	30	100	13	16	3500	1.33					
																	24	100	36	20	16
16	50	24	10	13	12	3000	1.33														
								120	20	50	30	100	13	16	3500	1.33					
																	24	100	36	20	16
16	50	24	10	13	12	3000	1.33														
								100	20	50	30	100	13	16	3500	1.33					
																	24	100	36	20	16
16	50	24	10	13	12	3000	1.33														
								120	20	50	30	100	13	16	3500	1.33					
																	24	100	36	20	16
16	50	24	10	13	12	3000	1.33														
								100	20	50	30	100	13	16	3500	1.33					
																	24	100	36	20	16
16	50	24	10	13	12	3000	1.33														
								120	20	50	30	100	13	16	3500	1.33					
																	24	100	36	20	16
16	50	24	10	13	12	3000	1.33														
								100	20	50	30	100	13	16	3500	1.33					
																	24	100	36	20	16
16	50	24	10	13	12	3000	1.33														
								120	20	50	30	100	13	16	3500	1.33					
																	24	100	36	20	16
16	50	24	10	13	12	3000	1.33														
								100	20	50	30	100	13	16	3500	1.33					
																	24	100	36	20	16
16	50	24	10	13	12	3000	1.33														
								120	20	50	30	100	13	16	3500	1.33					
																	24	100	36	20	16
16	50	24	10	13	12	3000	1.33														
								100	20	50	30	100	13	16	3500	1.33					
																	24	100	36	20	16
16	50	24	10	13	12	3000	1.33														
								120	20	50	30	100	13	16	3500	1.33					
																	24	100	36	20	16
16	50	24	10	13	12	3000	1.33														
								100	20	50	30	100	13	16	3500	1.33					
																	24	100	36	20	16
16	50	24	10	13	12	3000	1.33														
								120	20	50	30	100	13	16	3500	1.33					
																	24	100	36	20	16
16	50	24	10	13	12	3000	1.33														
								100	20												

# Economical Leveling Mounts

## Fixed, Stainless Steel Type Heavy Load

Code	Type		Material	
			Base	Bolt
E-WAB02	Fixed	Stainless Steel Type	SUS304	SUS304



Part Number		M	L	S	H	V	V1	Load(Kg)	Reference Weight (Kg/pcs)
Code	D								
E-WAB02	60	14	50	22	15	9	11	800	0.48
			100						0.51
			150						0.54
	80	16	50	24	22	10	13	1000	0.68
			100						0.77
			150						0.79
	100	20	50	30	25	13	16	1300	0.76
			100						0.78
			150						0.8
	120	24	50	36	27	16	19	1600	0.79
			100						0.81
			150						0.83
	150	30	50	46	30	13	16	1900	1.23
			100						1.25
			150						1.27
	180	36	50	56	36	16	19	2000	1.29
			100						1.31
			150						1.33
	210	42	50	66	42	13	16	1700	2.06
			100						2.08
			150						2.1
	240	48	50	76	48	16	19	2200	2.12
			100						2.14
			150						2.16
270	54	50	86	54	16	19	2200	2.18	
		100						2.2	
		150						2.22	
300	60	50	96	60	24	24	2500	2.2	
		100						2.22	
		150						2.24	
330	66	50	106	66	24	24	2500	2.26	
		100						2.28	
		150						2.28	



Part Number		M	L	S
Code	D			
E-WAB02	60	14	50	27
E-WAB02 - D80 - M16 - L50				

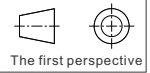
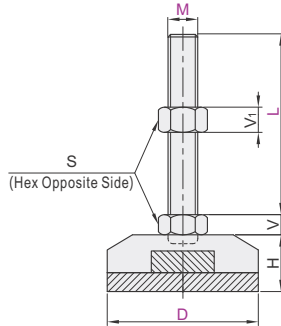


Discount price		
Per	1~99	100~
Price	100%	Additional quotation



Delivery
6

Code	Type	Material			Surface Treatment	
		Bottom Shell	Bolt	Bottom	Bottom Shell	Bolt
E-WAC51	Fixed	S45C	S45C	Rubber(Yellow)	Zinc-plated	Zinc-plated



Part Number		M	L	S	H	V	V <sub>1</sub>	Load (kg)	Reference Weight (kg/pcs)
Code	D								
E-WAC51	60	12	50	19	8	10	600	0.49	
			75					0.52	
		16	100	24	10	13	700	0.55	
			125					0.58	
			150					0.61	
			75					0.51	
	80	16	100	24	27	10	13	800	0.52
			125						0.54
			150						0.56
		20	75	30	27	13	16	850	0.52
			100						0.53
			125						0.54
				150					0.55

Part Number		M	L	S	H	V	V <sub>1</sub>	Load (kg)	Reference Weight (kg/pcs)
Code	D								
E-WAC51	16	24	75	24	10	13	800	0.72	
			100					0.74	
			125					0.76	
			150					0.78	
	100	20	75	30	32	13	16	900	0.8
			100						0.82
			125						0.84
			150						0.86
	24	24	100	36	16	19	950	0.88	
			125					0.91	
			150					0.93	
			200					0.97	
	120	20	75	30	13	16	1000	0.92	
			100					0.95	
			125					0.98	
			150					1.1	
24		36	100	34	16	19	1050	1.11	
			125					1.24	
			150					1.33	
			200					1.42	



Part Number		M	L	S
Code	D			
E-WAC51	D80	M16	L75	S24
E-WAC51 — D80 — M16 — L75				



Discount price	
Per	1~99 100~
Price	100% Additional quotation



Delivery	
	6