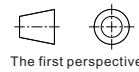
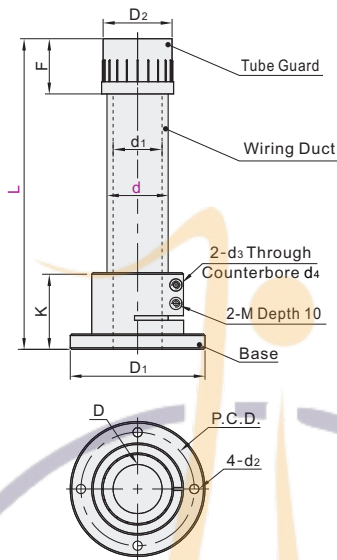


Wiring Duct

Code	Type	Material			Surface Treatment		
		Base	Wiring Duct	Tube Guard	Base	Wiring Duct	Tube Guard
ZCC01	Wiring Duct	A6061	A6063	PVC	Clear Anodize	—	—



Part Number		L	D	D ₁	D ₂	d ₁	d ₂	d ₃	d ₄	F	K	M	P.C.D.
Code	d	5 mm Increment											
ZCC01	32	80~700	29	83	39	30	6	4.5	8	20	50	M4	68
	50		43	98	56	48							84



Part Number	d	L
Code		5 mm Increment
ZCC01	32	80~700
	50	

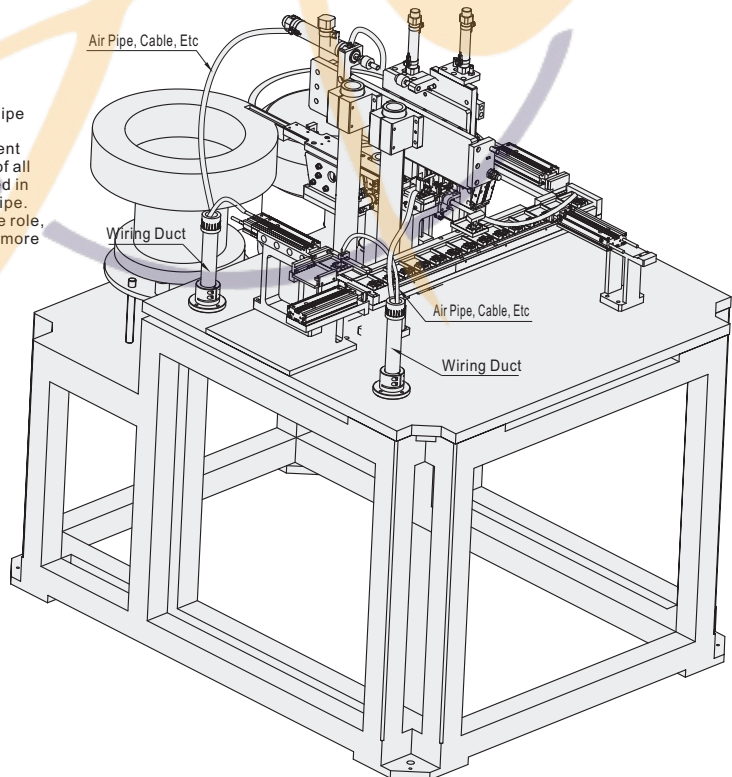
ZCC01 — d50 — L300



Discount price
Per 1~10 11~
Price 100% Additional quotation

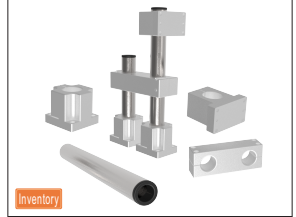


Brief Description:
 Wiring pipe consists of mounting base, wiring pipe and pipe guard.
 Usually used to install the mechanism component on the equipment, the mechanism component of all the multifarious lines and pipelines are arranged in an orderly manner and then threaded into the pipe. The line and pipe have played a good protective role, so that the equipment of the pipe road wiring is more concise and beautiful.

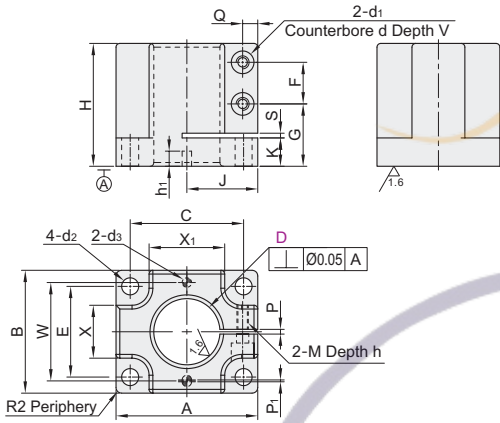


Code	Type	Material	Surface Treatment	Accessories	
ZCD01	Mechanism Installation Components	Base	A6061	Clear Anodize	White Hex Socket Head Cap Screw (2 pcs)
ZCD06		Post	45	Hard Chrome Plating	Wire Sleeve (1pc)
ZCD11		Lock Block	A6061	Clear Anodize	—
ZCD16		Strengthening Block	A6061	Clear Anodize	White Hex Socket Head Cap Screw (4 pcs)

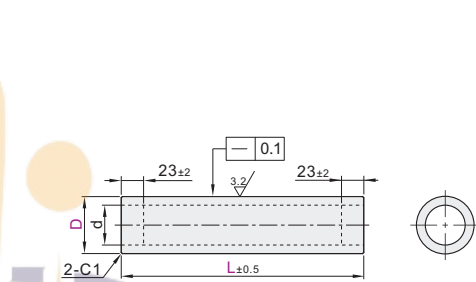
□ If require black surface treatment, please contact us to customize.



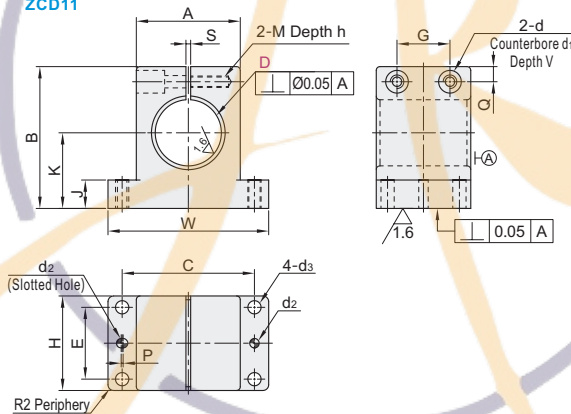
Base
ZCD01



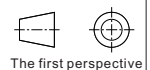
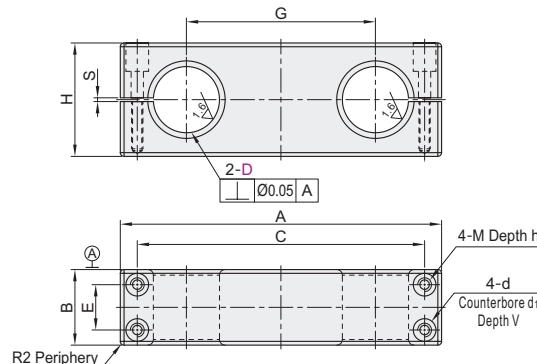
Post
ZCD06



Lock Block
ZCD11



Strengthening Block
ZCD16



The first perspective

Base

Part Number		A	B	H	C	E	F	G	J	K	W	P	P ₁	S	Q	V	M	d	d ₁	d ₂	d ₃	h	h ₁	X	X ₁			
Code	D																											
ZCD01	35	75	65	65	60	48	22	33	40	15	52					8	M6	12	6.5	9					28	40		
	50	85	75	75	70	55	30	35	45		63	3±0.3	1	3±0.3	8	10									15	8	37	52
	75	120	100	95	100	76	35	45	60	25	88.5					16					5	+0.02 -0.01				54	78	
	100	145	130	115	123	107	45	50	73	30	117					24	M8	15	8.5	11			25			85	101	

Lock Block

Part Number		A	B	H	W	C	E	G	J	K	P	Q	S	V	M	d	d ₁	d ₂	d ₃	h							
Code	D																										
ZCD11	35	55	75	50	85	70	38	28	15	40				15	M6	6.5	12	5			7	25					
	50	70	80	75	100	85	50	45			±0.1	1	8	20													
	75	95	115	95	135	115	70	50	25	55			3±0.3	25	M8	8.5	15	8			+0.02 -0.01						
	100	120	140	105	160	140	80	65	30	70			12	30													

Strengthening Block

Part Number		A	B	H	C	E	G	S	V	M	d	d ₁	h
Code	D												
ZCD16	35	170	40	60	152	24		100	15	M6	6.5	12	25
	50	190	50	70	172	30			20				
	75	250	65	95	223	40	130	3±0.3	22				
	100	310	75	120	276	50	150		25	M10	11	18	30

Post

Part Number		L (5 mm Inc.)	d
Code	D		
ZCD06	35	80~1000	28±1
	50	90~1000	35±1
	75	100~1000	56±1
	100	120~1000	76±1



Please order as shown

Base

Part Number		A
Code	D	
ZCD01	35	75
	50	85

ZCD01 - D35

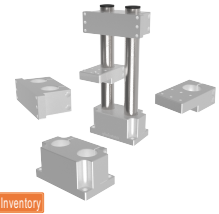
Post

Part Number		L
Code	D	
ZCD06	35	80~1000
	50	90~1000

ZCD06 - D35 - L200

Mechanism Installation Components

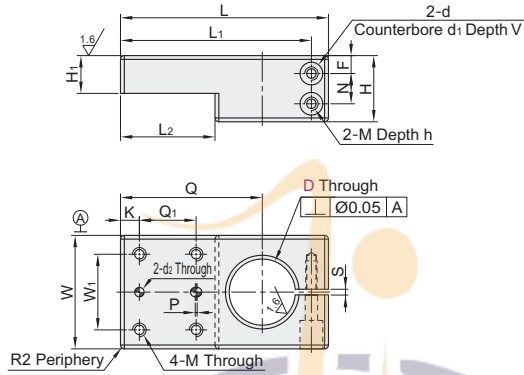
- Parallel Lock Block/Two-Hole Base
- Two-Hole Lock Block



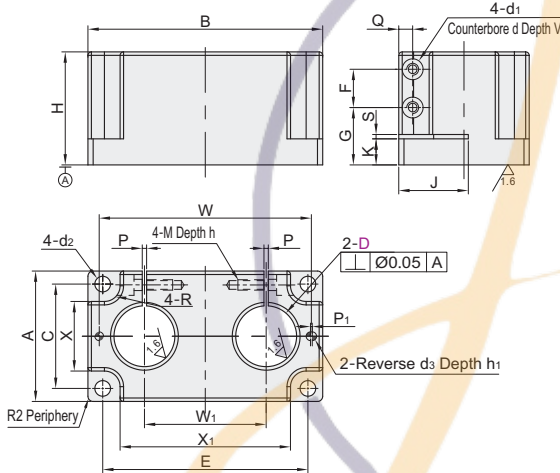
Inventory

Code	Type	Material	Surface Treatment	Accessories
ZCD17	Mechanism Parallel Lock Block	A6061	Clear Anodize	White Hex Socket Head Cap Screw (2 pcs)
ZCD18	Installation Two-Hole Base			White Hex Socket Head Cap Screw (4 pcs)
ZCD19	Components Two-Hole Lock Block			

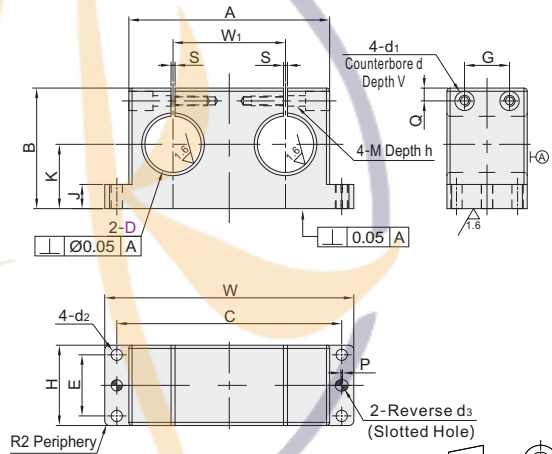
Parallel Lock Block
ZCD17



Two-Hole Base
ZCD18



Two-Hole Lock Block
ZCD19



The first perspective

Parallel Lock Block

Part Number		H ₁	L	L ₁	L ₂	M	h	d	d ₁	d ₂	V	F	N	H	W	W ₁	K	S	P	Q	Q ₁
Code	D																				
ZCD17	35	20	110	101	50	M6	15	6.5	12	5	15	9.5	16	35	60	40	10	3±0.3	1	75	30
	50	+0.06	25	140	131		65	20	+0.02	20		10	20	40	70	50				100	45
	75	+0.01	30	190	179	80	M8	25	8.5	16	8	25	13	24	50	95	65	15		130	50
	100		35	220	209	90		30		30	15	30	60	120	90	150	60				

Two-Hole Base

Part Number		H	B	d	d ₁	V	Q	F	S	K	G	J	A	C	X	d ₂	W	E	X ₁	W ₁	R	P	P ₁	d ₃	h ₁	M	h	
Code	D																											
ZCD18	35	+0.06	65	135	12	6.5	8	22	3±0.3	15	33	40	75	60	40	9	122	118	98	70	±0.05	9	3±0.3	1	5 ^{+0.02} _{-0.01}	10	M6	20
	50	+0.01	75	160	10	8	30	35	45	85	70	52	148	143	122	85												

Two-Hole Lock Block

Part Number		A	W ₁	S	B	K	J	M	h	d	d ₁	V	Q	G	d ₂	H	E	W	C	P	d ₃		
Code	D																						
ZCD19	35	+0.06	125	70	±0.05	3±0.3	75	40±0.1	15	M6	20	12	6.5	15	8	28	7	50	38	155	140	1	5 ^{+0.02} _{-0.01}
	50	+0.01	155	85			80	75	20	12	6.5	20	8	45	7	75	50	185	170				

Parallel Lock Block

Part Number		H ₁	
Code	D		
ZCD17	35	+0.06	20
	50	+0.01	25

ZCD17—D35

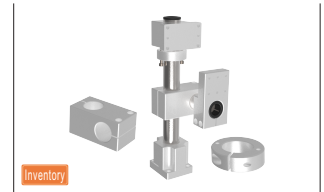


Discount price
Per 1~5 6~
Price 100% Additional quotation

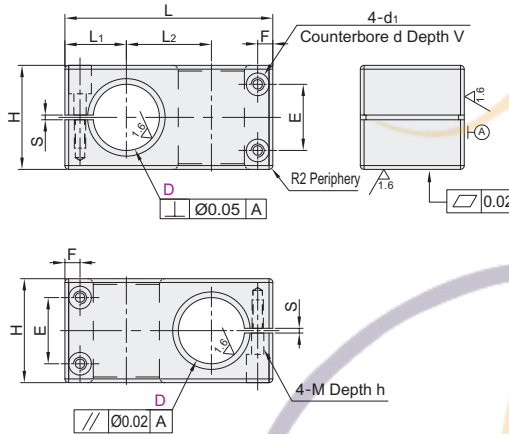


Please order as shown

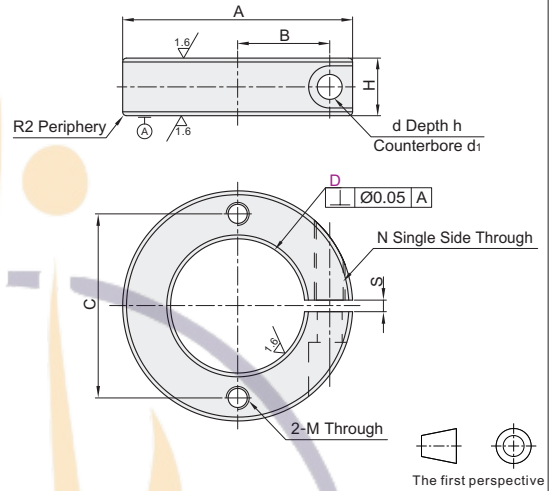
Code	Type	Material	Surface Treatment	Accessories
ZCD20	Mechanism Installation Components	A6061	Clear Anodize	White Hex Socket Head Cap Screw (4 pcs)
ZCD21	Micro Adjustment Ring			Hex Socket Head Cap Screw (1 pc)



Corner Block
ZCD20



Micro Adjustment Ring
ZCD21



Corner Block

Part Number		L	L ₁	L ₂	H	S	d	d ₁	V	E	F	M	h
Code	D												
ZCD20	35	110	32.5	45	55	3±0.3	12	6.5	20	35	8	M6	15
	50	140	40	60	70					42			20

Micro Adjustment Ring

Part Number		A	B	C	H	d	d ₁	h	N	M	S	
Code	D											
ZCD21	35	60	23.5	48	18	6.5	11	8	M6	M6	3	±0.3
	50	75	31	63								

Corner Block

Part Number		L
Code	D	
ZCD20	35	110
ZCD20	50	140

ZCD20 - D35

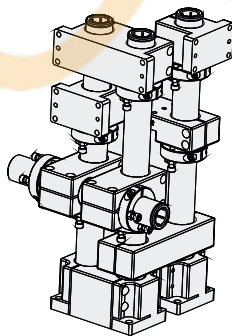
Micro Adjustment Ring

Part Number		A
Code	D	
ZCD21	35	60
ZCD21	50	75

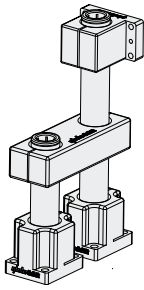
ZCD21 - D35



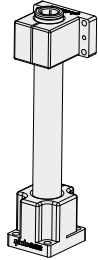
Discount price
Per 1~10 11~
Price 100% Additional quotation



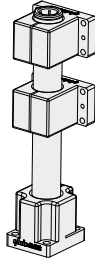
Mechanism Installation Components



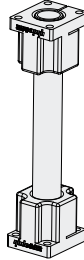
Base, Lock Block, Strengthening Block, Post



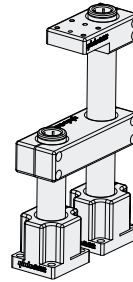
Base, Lock Block, Post, Micro Adjustment Ring



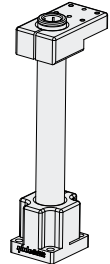
Base, Lock Block, Post



Base, Post

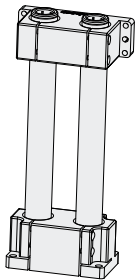


Base, Lock Block, Parallel Lock Block, Post

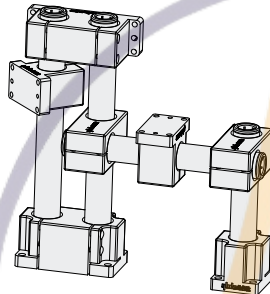


Parallel Lock Block, Base

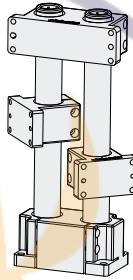
□ Brief introduction: the installation components of the mechanism can be widely used in the pneumatic manipulator, servo manipulator, common press-assembly and other mechanical components of the support installation. Base, Lock Block, Post, Strengthening Block, Parallel Lock Block can be chosen for any selection and collocation. Upright post is hard chrome plating materials, and through grinding, guarantees the excellent rigidity and smallest shape and position tolerance is only 0.05 mm, the hollow structure, to facilitate the electrical wiring, on the equipment of the whole system to promote the class a, body installation components allows even use multilayer design, can achieve maximum flexibility in terms of system design.



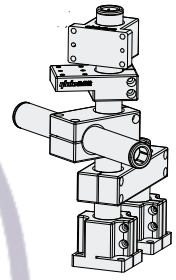
Two-Hole Base, Two-Hole Lock Block, Post



Two-Hole Base, Two-Hole Lock Block, Lock Block, Corner Block, Post



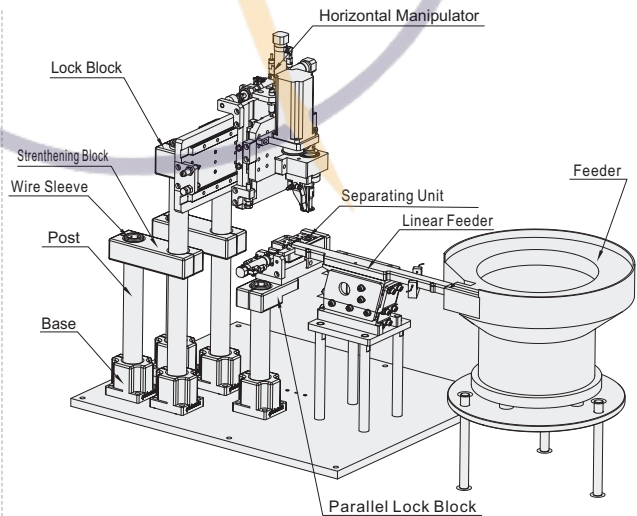
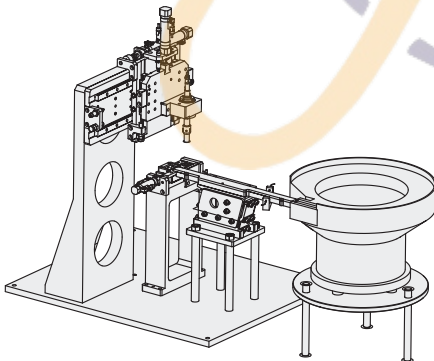
Two-Hole Base, Two-Hole Lock Block, Lock Block, Post



Corner Block, Lock Block, Parallel Lock Block, Post, Strengthening Block

□ Simple explanation: the movement of high stiffness and no vibration occasions, accurate shape and position tolerance, even if the long post, also ensure the high precision, multiple column diameter, minimum interference contour, the whole system of multiple clamping components, can realize the whole system outline minimum interference, a variety of clamping element, can realize the drilling assembly and centering, replicable, can achieve precise Angle the element assembly. Therefore, double hole base and double hole shaft lock block from the cost of design, assembly, performance comparing to its base and lock block more advantages.

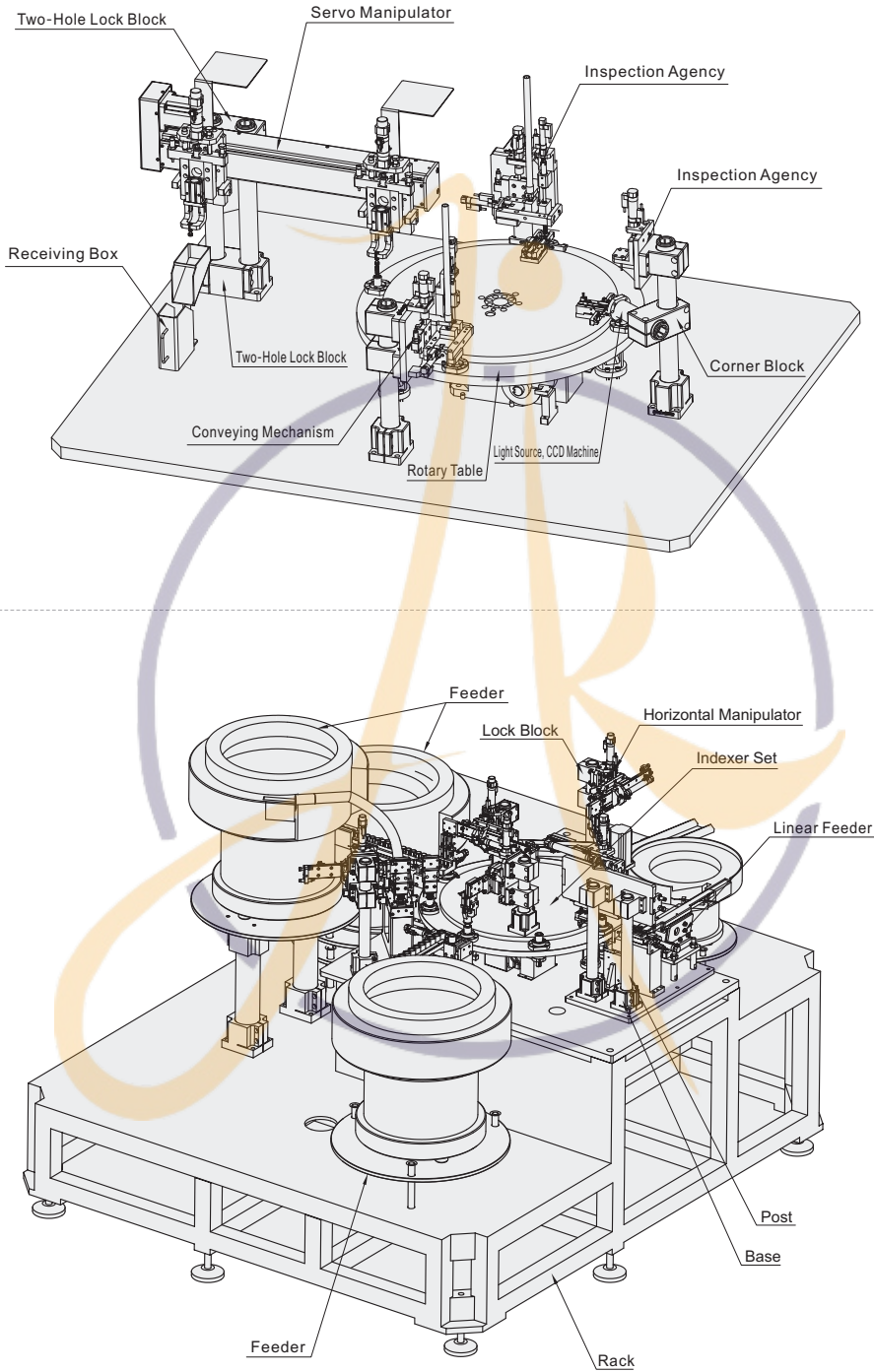
EX
Example



□ The Traditional Way
Complex structure, not easy to debug, high cost, Complicated wiring

□ Mechanism installation component way Advantages:

- Parts compact structure, installation needs small space, beautiful appearance;
- Replace the laminated plate to reinforcement type design and installation;
- Easy to install, flexible, adjustable;
- Standardized production, cost reduction.

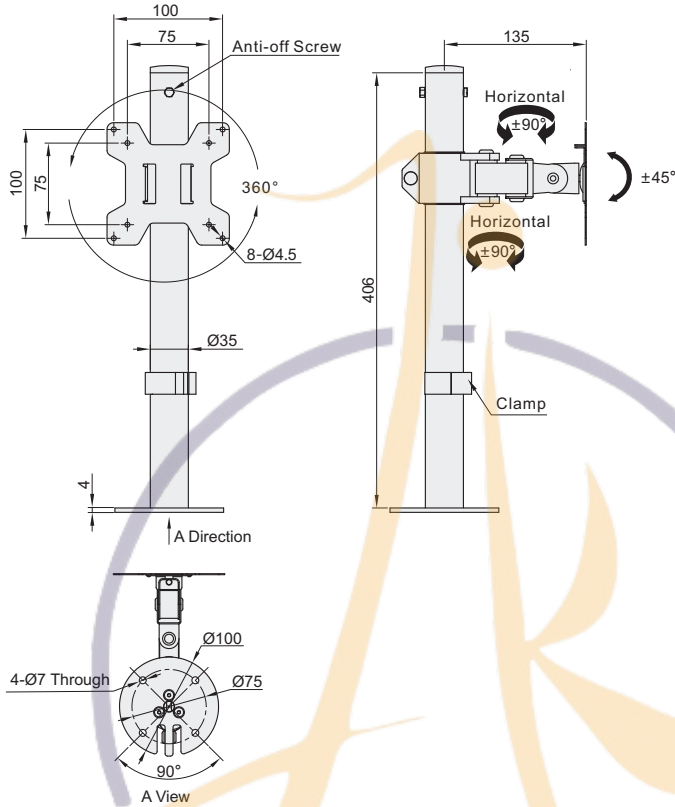


Computer Display Arms ◀ Vertical

Code	Type	Installation Method	Material	Surface Treatment
NHD02	Vertical	Keyhole Fixing	Q235	Black Spray Paint

Features

- Display arms are fixed by screw which is widely used in industry;
- The parts can be adjusted from multi-angle which is very flexible;
- Product can be installed in reverse.



Part Number	Applicable Monitor Size	Maximum Load	Accessories
Code			
NHD02	17"~27"	9kg	a:M4 x 12 Phillips Pan Head Screw-4 pcs b:M4 x 30 Phillips Pan Head Screw-4 pcs c:M5 x 16 Hexagon Socket Head Screw-3 pcs d:M6 Hexagon Cap Nut-1pc e:M5 x 40 Hexagon Socket Pan Head Screw-1 pc f:M5 Hex Nuts-1pc g:Thick Washer-4 pcs h:Thin Washer-4 pcs i:Clamp-1 pc



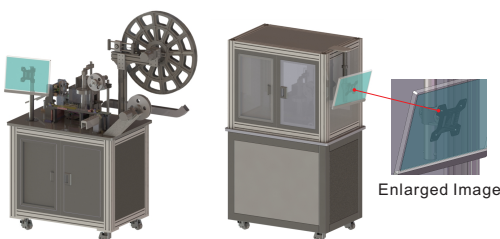
Part Number	Applicable Monitor Size
Code	
NHD02	17"~27"



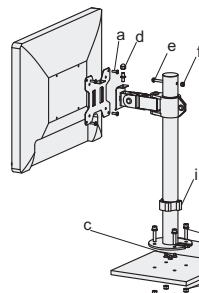
Discount price
Per 1~10 11~
Price 100% Additional quotation



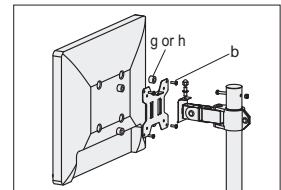
Delivery
6



Installation Example



The mounting hole of the display is provided with a countersink



M6 Screw Set (Not Included Accessories)

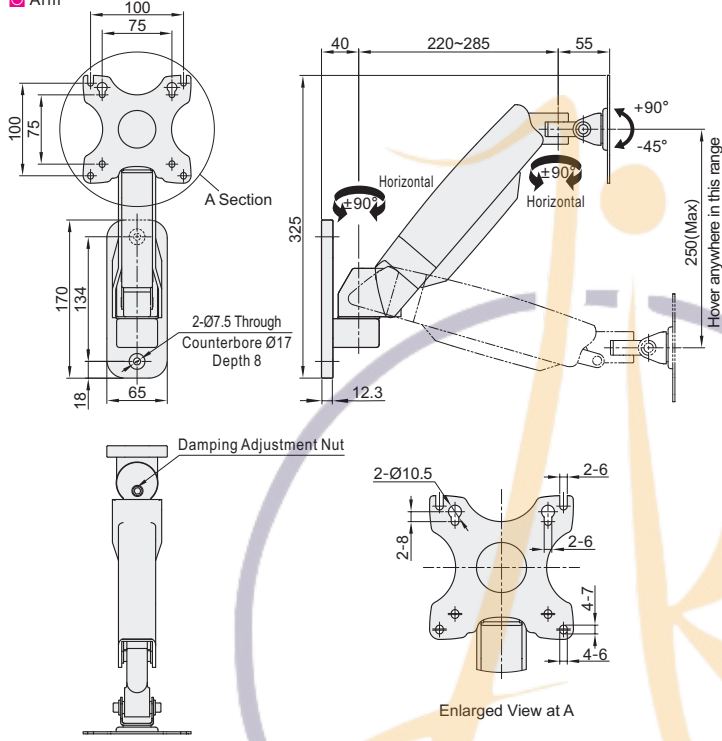


Code	Type	Installation Method	Material		Surface Treatment			
			Arm	Base	Arm	Base		
NHD11	Wall Hanging	Gas Spring	Single Arm	Keyhole Installation	Q235+ABS Plastic	Q235	Black Spray Paint	White Spray Paint

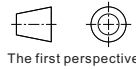
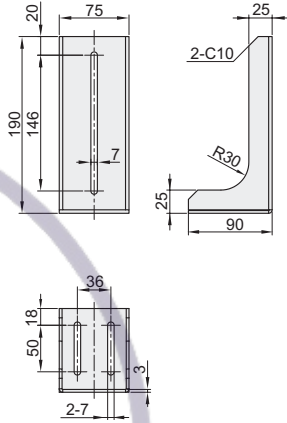
Features

- Monitor can hover anywhere with the help of gas spring;
- Support for different size of monitors as supporting force of the gas spring can be adjusted;
- In the vertical direction, the arm can be adjusted in the range of 250 mm.

Arm



Base (For Vertically Install)



Part Number		Applicable Monitor Size	Maximum Load	Accessories
Code	Base			
NHD11	N(No) T(Yes)	17"~27"	6.5kg	a:M4 x 12 Phillips Pan Head Screw-4 pcs d:M5 Washer-4 pcs b:M5 x 12 Phillips Pan Head Screw-4 pcs e:M6 Washer-2 pcs c:Wrench-1 pc



Part Number		Applicable Monitor Size
Code	Base	
NHD11	N(No) T(Yes)	17"~27"

NHD11 - N



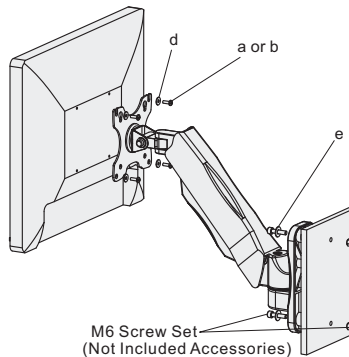
Discount price	
Per	1~10 11~
Price	100% Additional quotation



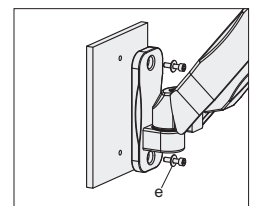
Delivery	
6	



Display Arms Installation Example



Base Installation Example

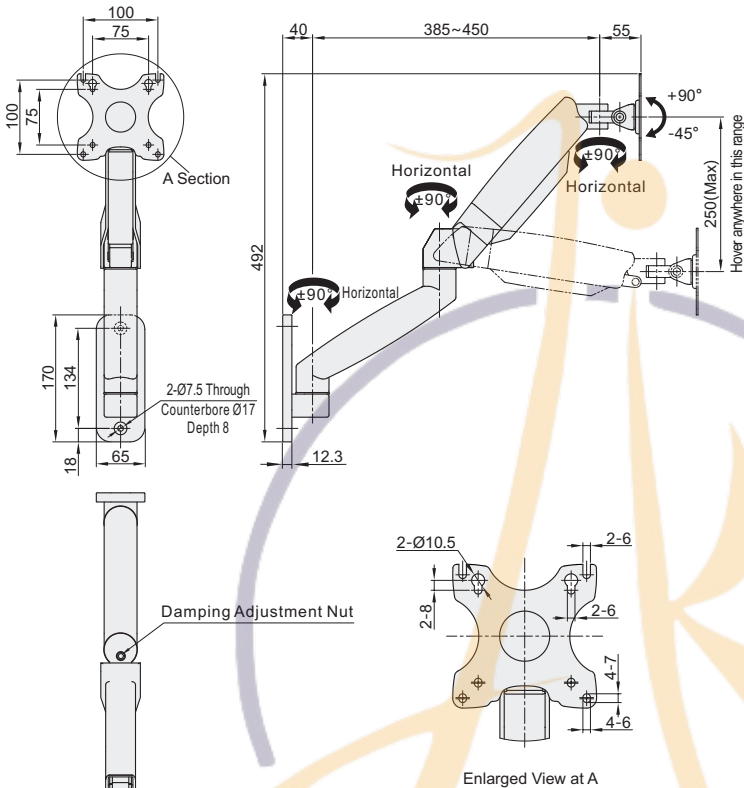


Code	Type	Installation Method	Material		Surface Treatment			
			Arm	Base	Arm	Base		
NHD12	Wall Hanging	Gas Spring	Double Arms	Keyhole Installation	Q235+ABS Plastic	Q235	Black Spray Paint	White Spray Paint

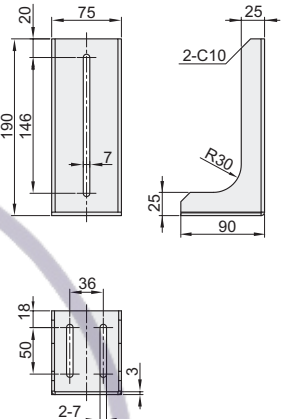
Features

- Monitor can hover anywhere with the help of gas spring;
- The support force for gas spring can be adjusted and is compatible with different types of display installations;
- Has a wide adjustment range.

Arm



Base (For Vertically Install)



Part Number		Applicable Monitor Size	Maximum Load	Accessories	
Code	Base			a:M4 x 12 Phillips Pan Head Screw-4 pcs	d:M5 Washer-4 pcs
NHD12	N(No) T(Yes)	17" ~ 27"	6.5kg	b:M5 x 12 Phillips Pan Head Screw-4 pcs	e:M6 Washer-2 pcs
				c:Wrench-1 pc	



Part Number		Applicable Monitor Size
Code	Base	
NHD12	N(No) T(Yes)	17" ~ 27"

NHD12 - N



Discount price

Per	1 ~ 10	11 ~
Price	100%	Additional quotation



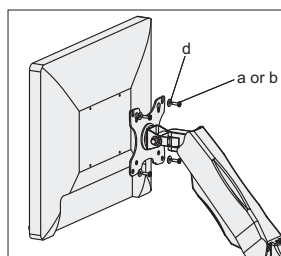
Delivery

6

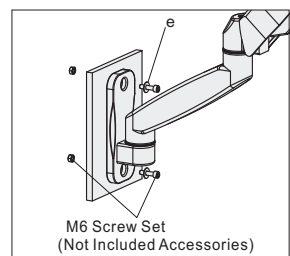
Functional unit B6



Display Arms Installation Example



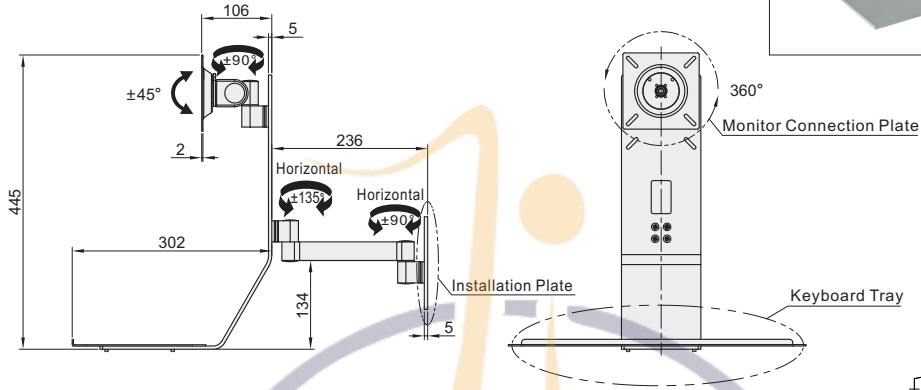
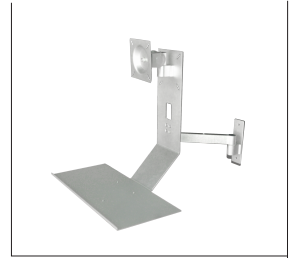
Base Installation Example



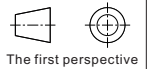
Code	Type	Installation Method	Material	Surface Treatment		
NHD21	Wall Hanging	Integrated Keyboard Tray	Industry Keyboard	Keyhole Installation	Aluminum	Clear Anodize
NHD22			Ordinary Keyboard			

Feature

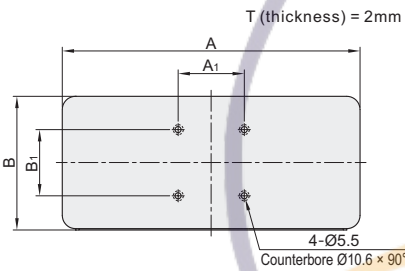
- The surface of the product adopts clear anodize process, Which is succinct and beautiful;
- The product has a multi-joint structure which brings more flexible adjustment;
- 2 choices: industry keyboard&ordinary keyboard.



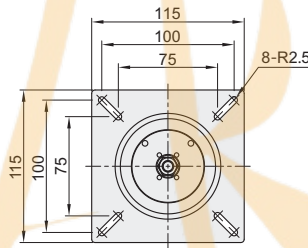
Keyboard tray and bracket body are packed separately, please be careful of losing.



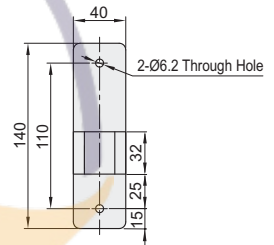
Keyboard Tray



Monitor Connection Plate



Installation Plate



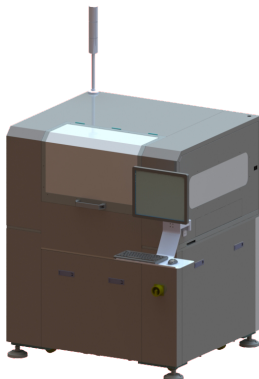
Part Number	Size of Keyboard Tray				Applicable Monitor Size	Maximum Load	Accessories
	Code	A	A ₁	B			
Industrial Keyboard NHD21	450				17"~27"	10kg	a:M6 x 12 Phillips Countersunk Head Screw-8 pcs b:M4 x 10 Phillips Pan Head Screws-4 pcs c:M5 x 10 Phillips Flat Head Screws-4 pcs d:M5 Hex Nuts-4 pcs e:M5 Hex Cap Nuts-4 pcs
Ordinary Keyboard NHD22	610	100	197±2	100			



Part Number	Size of Keyboard Tray	
Code	A	A ₁
NHD21	450	
NHD22	610	100



Discount price			
Per	1~4	5~	
Price	100%	Additional quotation	



Display Arms Installation Example

