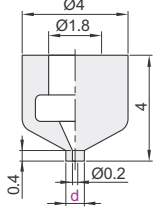


(Precision)Small Vacuum Pad

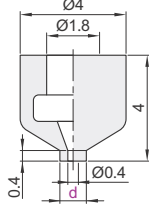
Small Vacuum Pad

Code	Material	Color
J-WEP01	Nitrile Rubber NBR	Black

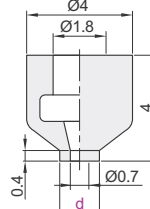
Pad Diameter $\varnothing 0.7$



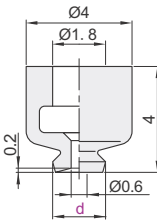
Pad Diameter $\varnothing 1$



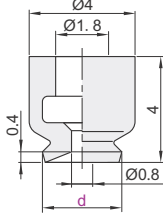
Pad Diameter $\varnothing 1.5$



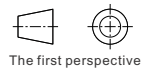
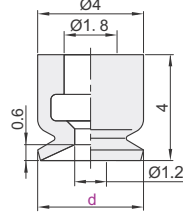
Pad Diameter $\varnothing 2$



Pad Diameter $\varnothing 3$



Pad Diameter $\varnothing 4$



The first perspective



Inventory

Vacuum Pads
D7

Part Number	
Code	Pad Diameter d
J-WEP01	0.7
	1
	1.5
	2
	3
	4



Part Number	
Code	d
J-WEP01	0.7
	1

J-WEP01 - d0.7



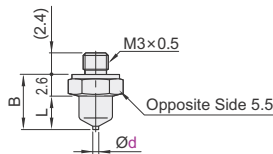
Discount price	
per	Additional quotation
1~29	30~
Price 100%	



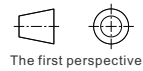
Delivery
6

Small Vacuum Pad with Fitting

Code	Type	Main Body		Vacuum Pad	Color
		Material	Surface Treatment	Material	
J-WES01	Direct Mount	Brass	Electroless Nickel Plating	Nitrile Rubber	Black

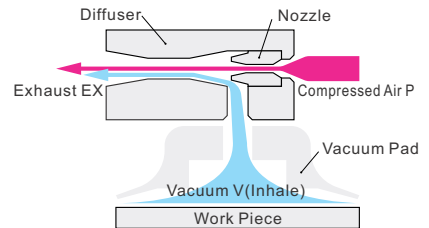


Inventory



The first perspective

Part Number		B	L	Weight (g)
Code	Pad Diameter d			
J-WES01	0.7	6.6	4	1
	1			
	1.5			
	2			
	3			
	4			



Part Number		
Code	d	B
J-WES01	0.7	6.6
	1	

J-WES01 - d0.7



Discount price	
Per	Additional quotation
1~29	30~
Price 100%	



Delivery
6

(Precision)Standard Vacuum Pad Screw for Vacuum Pad

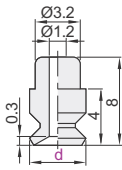
Vacuum Pads 07

Precision Type, Standard Vacuum Pad

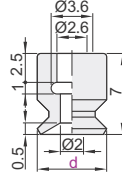
Code	Material	Color
J-WEP06	Nitrile Rubber NBR	Black
J-WEP07	Conductive Silicon Rubber SE	Black



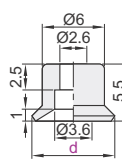
Pad Diameter $\varnothing 4$



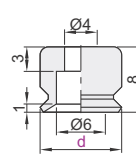
Pad Diameter $\varnothing 6$



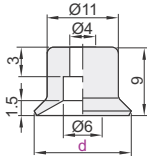
Pad Diameter $\varnothing 8$



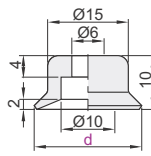
Pad Diameter $\varnothing 10$



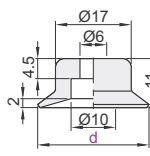
Pad Diameter $\varnothing 15$



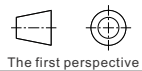
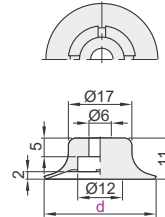
Pad Diameter $\varnothing 20$



Pad Diameter $\varnothing 25$



Pad Diameter $\varnothing 30$



The first perspective

Part Number	
Code	Pad Diameter d
J-WEP06 J-WEP07	4
	6
	8
	10
	15
	20
	25
	30



Part Number	
Code	d
J-WEP06	4
J-WEP07	6

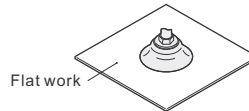
J-WEP06—d4



Discount price	
Per	Additional quotation
1~29	30~
Price 100%	



Delivery	
6	

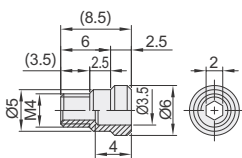


Screw for Vacuum Pad

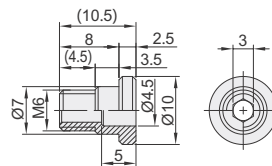
Code	Type	Material	Surface Treatment
WEM91	Screw for Vacuum Pad	Brass	Electroless Nickel Plating



No.:4



No.:6



The first perspective

Part Number		Weight(g)	Applicable Vacuum Pad
Code	No.		
WEM91	4	1.1	Pad Diameter d10, d15
	6	3	Pad Diameter d20, d25



Part Number	
Code	No.
WEM91	4
	6

WEM91—4



Discount price	
Per	Additional quotation
1~29	30~
Price 100%	



Delivery	
6	

Applicable for Standard, Deep and Bellows Type Vacuum Pad.

Fixed Type, Vacuum Port on Top ▶
 Spring Type, Vacuum Port on Top ▶
 One-Touch Type

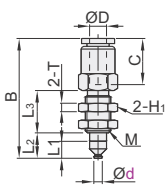
(Precision) Standard Vacuum Pad with Fitting

Fixed Type, Vacuum Port on Top

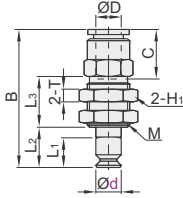
Code	Type	Takeover Method	Pad Material	Color
J-WES21	Fixed Type	One-Touch Type	Nitrile Rubber NBR	Black
J-WES22	Vacuum Port on Top		Conductive Silicon Rubber SE	



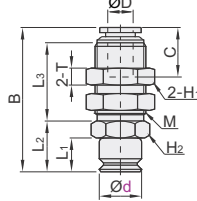
Pad Diameter $\varnothing 4$



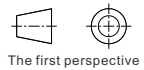
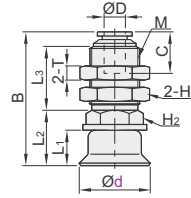
Pad Diameter $\varnothing 6, \varnothing 8$



Pad Diameter $\varnothing 10$



Pad Diameter $\varnothing 15 \sim 30$



Part Number		B	D	M	L ₁	L ₂	L ₃	C	Wrench Flats H ₁	Wrench Flats H ₂	T	Weight (g)
J-WES21 J-WES22	Code Pad Diameter d											
	4	28.3	4	M6×0.75	4	6	10	10.9	8	—	2	6
	6	32.6		M10×1	7	9.5			12		3	12.5
	8	31.1			5.5	8	12					
	10	34.1		M12×1	8	12	18.5		14	12		21
	15	35.1	6		9	13		11.7			4	21.5
	20	37.7		M14×1	10	15.6			17			37
25			11		16.6	18					39	
30	38.7											



Please order as shown

Part Number	B
Code d	
J-WES21 4	35.1
J-WES22 20	37.7

J-WES21—d15



Discount price	
Per	1~29 30~
Price	100% Additional quotation



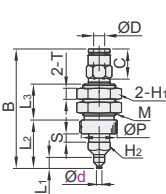
Delivery
10

Spring Type, Vacuum Port on Top

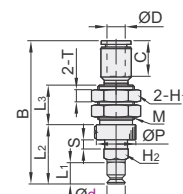
Code	Type	Takeover Method	Pad Material	Color
J-WES26	Spring Type	One-Touch Type	Nitrile Rubber NBR	Black
J-WES27	Vacuum Port on Top		Conductive Silicon Rubber SE	



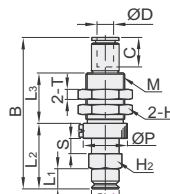
Pad Diameter $\varnothing 4$



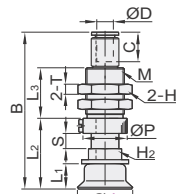
Pad Diameter $\varnothing 6, \varnothing 8$



Pad Diameter $\varnothing 10$



Pad Diameter $\varnothing 15 \sim 30$



Part Number		B	D	M	L ₁	L ₂	L ₃	P	C	Stroke S	Wrench Flats H ₁	Wrench Flats H ₂	T	Spring Max. Load(N)	Weight (g)
J-WES26 J-WES27	Code Pad Diameter d														
	4	43.2	4	M12×1	4	17.5			10.9						17
	6	47.1			7	19.5	13	13		3	14	8		0.9~1.9	18.5
	8	45.6			5	18									
	10	60.1		M14×1	8	26			11.7				4	4.0~7.1	35.5
	15	61.1	6		9	27	20	16		6	17	12			36
	20	62.1		M14×1	10	28									39.5
25	63.1		11		29									40	
30	63.1													42.5	



Please order as shown

Part Number	B
Code d	
J-WES26 4	61.1
J-WES27 20	62.1

J-WES26—d15



Discount price	
Per	1~29 30~
Price	100% Additional quotation



Delivery
10

(Precision Type) Standard Vacuum Pad with Fitting

- ◀ Spring Type , Vacuum Port on Side
- ◀ Spring Type , Direct-Mount
- One-Touch Type/ Screw Type

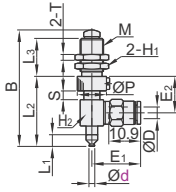
Spring Type, Vacuum Port on Side

Code	Type	Takeover Method	Pad Material	Color
J-WES31	Spring Type,	One-Touch Type	Nitrile Rubber NBR	Black
J-WES32	Vacuum Port on Side		Conductive Silicon Rubber SE	

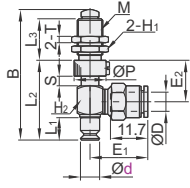
Inventory



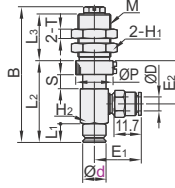
Pad Diameter $\varnothing 4$



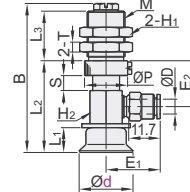
Pad Diameter $\varnothing 6,8$



Pad Diameter $\varnothing 10$



Pad Diameter $\varnothing 15 \sim 30$



Part Number Code	Pad Diameter d	B	D	M	L1	L2	L3	P	Stroke S	E1	E2	Wrench Flats		T	Spring Max. Load(N)	Weight (g)
												H1	H2			
J-WES31 J-WES32	4	40	4	M8×0.75	4	24	13	13	3	16.7	12.5	10	8	2	0.9~1.9	13.5
	6	41	7		25	18.1				13	4.0~7.1	48				
	8	39.5	5.5		23.5	17				12			4	51.5		
	10	58.1	8	35	M14×1		20	16	6		20.1	18.5			52	
	15	59.1	9	36		7.0~12.6										
	20	60.1	10	37						54						
	25	61.1	11	38	61											
30	61.1															



Part Number	B
Code d	
J-WES31 15	59.1
J-WES32 20	60.1

J-WES31 - d15



Discount price
Per 1~29 30~
Price 100% Additional quotation



Delivery
6

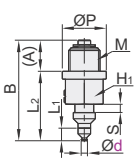
Spring Type, Direct-Mount

Code	Type	Takeover Method	Pad Material	Color
J-WES36	Spring Type,	Screw Type	Nitrile Rubber NBR	Black
J-WES37	Direct-Mount		Conductive Silicon Rubber SE	

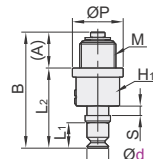
Inventory



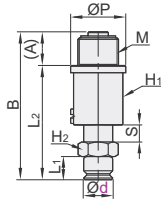
Pad Diameter $\varnothing 4$



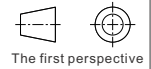
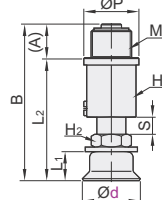
Pad Diameter $\varnothing 6,8$



Pad Diameter $\varnothing 10$



Pad Diameter $\varnothing 15 \sim 30$



Part Number Code	Pad Diameter d	B	M	A	L1	L2	P	Stroke S	Wrench Flats H1	Wrench Flats H2	Spring Max. Load(N)	Weight (g)
6	30.5	5.5	21	55.5								
8	51	8	39.3		56							
10	52	9	40.3	M14×1		20	19	5.8	17	12	7.9~15.0	58.5
15	54	10	42.3									
20	54	11	43.3		59							
25	55			61								
30	55											



Part Number	B
Code d	
J-WES36 15	52
J-WES37 20	54

J-WES36 - d15



Discount price
Per 1~29 30~
Price 100% Additional quotation



Delivery
6

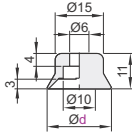
(Precision)Deep Type Vacuum Pad
(Precision)Bellow Vacuum Pad/Bellows Type Vacuum Pad with Fitting

(Precision)Deep Type Vacuum Pad

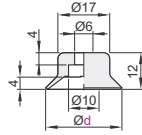
Code	Material	Color
J-WEP16	Nitrile Rubber NBR	Black



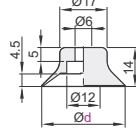
Pad Diameter $\varnothing 20$



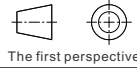
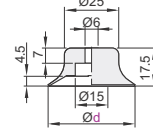
Pad Diameter $\varnothing 25$



Pad Diameter $\varnothing 30$



Pad Diameter $\varnothing 40$



Part Number	
Code	Pad Diameter d
J-WEP16	20
	25
	30
	40



Part Number	
Code	d
J-WEP16	$\varnothing 20$
J-WEP16 - d20	25



Discount price	
Per	Price
1~29	100%
30~	Additional quotation

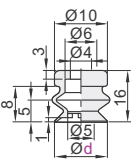
Delivery	
Per	Price
1~29	6
30~	Additional quotation

(Precision)Bellows Vacuum Pad

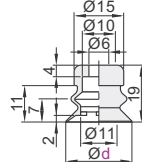
Code	Material	Color
J-WEP26	Nitrile Rubber NBR	Black
J-WEP27	Conductive Silicon Rubber SE	Black



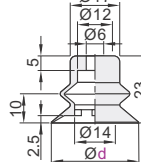
Pad Diameter $\varnothing 10$



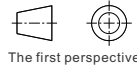
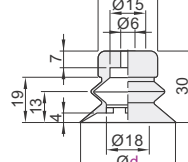
Pad Diameter $\varnothing 20$



Pad Diameter $\varnothing 30$



Pad Diameter $\varnothing 40$



Part Number	
Code	Pad Diameter d
J-WEP26 J-WEP27	10
	20
	30
	40



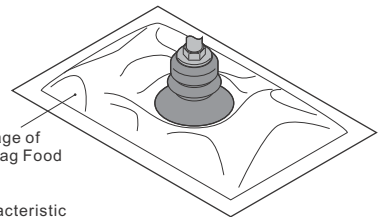
Part Number	
Code	d
J-WEP26	$\varnothing 30$
J-WEP27	40
J-WEP26 - d30	



Discount price	
Per	Price
1~29	100%
30~	Additional quotation



Delivery	
Per	Price
1~29	6
30~	Additional quotation

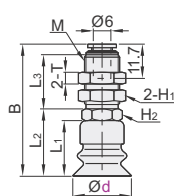


- Characteristic
It can absorb soft products such as paper and food packaging bags, and can also absorb the inclined products.

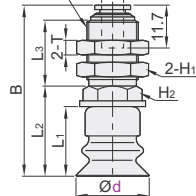
Bellows Type Vacuum Pad with Fitting

Code	Type	Takeover Method	Pad Material	Color
J-WET31	Fixed Type,	One-Touch Type	Nitrile Rubber NBR	Black
J-WET32	Vacuum Port on Top		Conductive Silicon Rubber SE	

Pad Diameter $\varnothing 10$



Pad Diameter $\varnothing 20-40$



Part Number		B	M	L1	L2	L3	Wrench Flats H1	Wrench Flats H2	T	Weight (g)
Code	Pad Diameter d									
J-WET31	10	42.1	M12×1	16	20	18.5	14	12		21.5
	20	46.7		19	24.6					36.5
	30	50.7	M14×1	23	28.6	18	17	14	4	40
J-WET32	40	57.7		30	35.6					48.5



Part Number		
Code	d	B
J-WET31	$\varnothing 10$	50.7
J-WET32	40	57.7
J-WET31 - d30		



Discount price	
Per	Price
1~29	100%
30~	Additional quotation

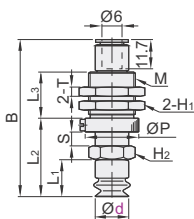
Delivery	
Per	Price
1~29	6
30~	Additional quotation

(Precision) Bellows Type Vacuum Pad with Fitting

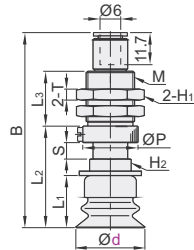
Spring Type, Vacuum Port on Top

Code	Type	Takeover Method	Pad Material	Color
J-WET36	Spring Type,	One-Touch Type	Nitrile Rubber NBR	Black
J-WET37	Vacuum Port on Top		Conductive Silicon Rubber SE	

Pad Diameter $\varnothing 10$



Pad Diameter $\varnothing 20\sim 40$

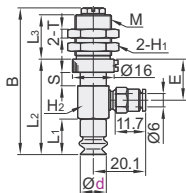


Part Number		B	M	L ₁	L ₂	L ₃	P	Stroke S	Wrench Flats H ₁	Wrench Flats H ₂	T	Spring Max. Load(N)	Weight (g)
Code	Pad Diameter d												
J-WET36	10	68.1	M14×1	16	34	20	16	6	17	12	4	4.0~7.1	36
	20	71.1		19	37							39.5	
J-WET37	30	75.1		23	41							43.5	
	40	82.1	30	48	52								

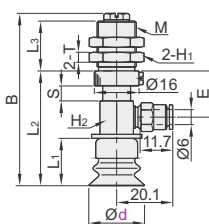
Spring Type, Vacuum Port on Side

Code	Type	Takeover Method	Pad Material	Color
J-WET41	Spring Type,	One-Touch Type	Nitrile Rubber NBR	Black
J-WET42	Vacuum Port on Side		Conductive Silicon Rubber SE	

Pad Diameter $\varnothing 10$



Pad Diameter $\varnothing 20\sim 40$

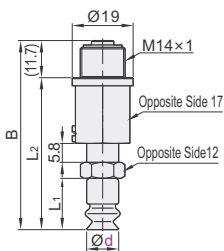


Part Number		B	M	L ₁	L ₂	L ₃	Stroke S	E	Wrench Flats H ₁	Wrench Flats H ₂	T	Spring Max. Load(N)	Weight (g)
Code	Pad Diameter d												
J-WET41	10	66.1	M14×1	16	43	20	6	18.5	17	12	4	4.0~7.1	48
	20	69.1		19	46							51.5	
J-WET42	30	73.1		23	50							55	
	40	80.1	30	57	63.5								

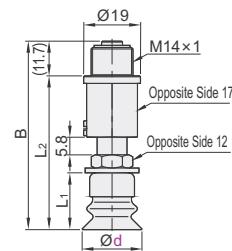
Spring Type, Direct-Mount

Code	Type	Takeover Method	Pad Material	Color
J-WET46	Spring Type,	Screw Type	Nitrile Rubber NBR	Black
J-WET47	Direct-Mount		Conductive Silicon Rubber SE	

Pad Diameter $\varnothing 10$



Pad Diameter $\varnothing 20\sim 40$



Part Number		B	L ₁	L ₂	Spring Max. Load(N)	Weight (g)
Code	Pad Diameter d					
J-WET46	10	59	16	47.3	7.9~15.0	56
	20	63	19	51.3		58.5
J-WET47	30	67	23	55.3		62
	40	74	30	62.3	70.5	



Part Number		B
Code	d	
J-WET36	10	67
J-WET47	40	74

J-WET46—d30



Discount price	
Per	Additional quotation
1~29	30~
Price 100%	



Delivery
6

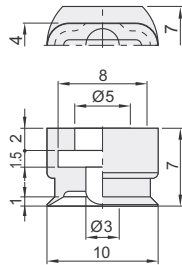
(Precision)Oval Vacuum Pad

Code	Material	Color
J-WEP41	Nitrile Rubber NBR	Black
J-WEP42	Silicon Rubber S	White

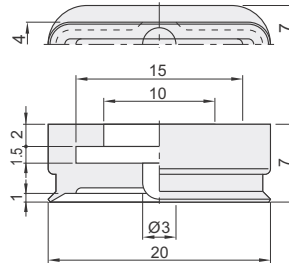


Inventory

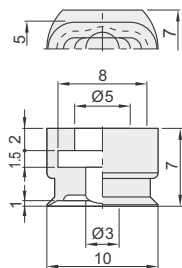
Pad Diameter 4-10



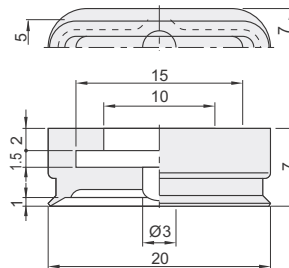
Pad Diameter 4-20



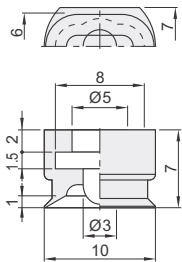
Pad Diameter 5-10



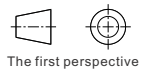
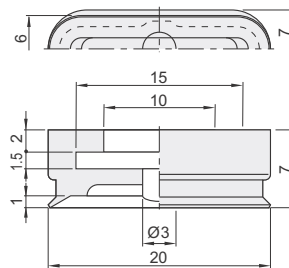
Pad Diameter 5-20



Pad Diameter 6-10



Pad Diameter 6-20



The first perspective

Part Number	
Code	Pad Diameter d
J-WEP41 J-WEP42	4-10
	4-20
	5-10
	5-20
	6-10
	6-20



Please order as shown

Part Number	
Code	d
J-WEP41	4-10
J-WEP42	4-20
J-WEP41-d4-10	



Example



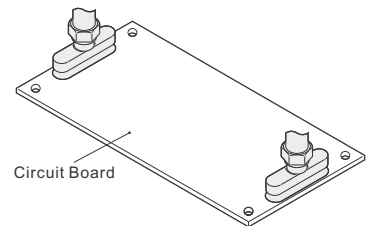
Discount price

Per	1~29	30~
Price	100%	Additional quotation



Delivery

6



Circuit Board

- Characteristic
It is most suitable for workpieces with multiple small suction cups, such as adsorption round bars.

Fixed Type, Vacuum Port on Top

Code	Type	Takeover Method	Pad Material	Color
J-WEU31	Fixed Type,	One-Touch	Nitrile Rubber NBR	Black
J-WEU32	Vacuum Port on Top	Type	Silicon Rubber S	White

The first perspective

Fixed Type, Vacuum Port on Top

Part Number		Weight (g)
Code	Pad Diameter d	
	4-10	31.5
	4-20	32
	5-10	31.5
	5-20	32
	6-10	31.5
6-20	32	

J-WEU31
J-WEU32

Part Number
Code d
J-WEU31 4-10
J-WEU32 5-10
J-WEU31-d4-10

Discount price
Per 1~29 30~
Price 100% Additional quotation

Delivery 6

Please order as shown

Spring Type, Vacuum Port on Top

Code	Type	Takeover Method	Pad Material	Color
J-WEU36	Spring Type,	One-Touch	Nitrile Rubber NBR	Black
J-WEU37	Vacuum Port on Top	Type	Silicon Rubber S	White

The first perspective

Spring Type, Vacuum Port on Top

Part Number		Spring Max. Load (N)	Weight (g)
Code	Pad Diameter d		
	4-10		35
	4-20		35.5
	5-10	7.9~12.6	35
	5-20		35.5
	6-10		35
6-20		35.5	

J-WEU36
J-WEU37

Part Number
Code d
J-WEU36 4-10
J-WEU37 5-10
J-WEU36-d4-10

Discount price
Per 1~29 30~
Price 100% Additional quotation

Delivery 6

Please order as shown

Spring Type, Vacuum Port on Side

Code	Type	Takeover Method	Pad Material	Color
J-WEU41	Spring Type,	One-Touch	Nitrile Rubber NBR	Black
J-WEU42	Vacuum Port on Side	Type	Silicon Rubber S	White

The first perspective

Spring Type, Vacuum Port on Side

Part Number		Spring Max. Load (N)	Weight (g)
Code	Pad Diameter d		
	4-10		46.5
	4-20		47
	5-10	7.0~12.6	46.5
	5-20		47
	6-10		46.5
6-20		47	

J-WEU41
J-WEU42

Part Number
Code d
J-WEU41 4-10
J-WEU42 5-10
J-WEU41-d4-10

Discount price
Per 1~29 30~
Price 100% Additional quotation

Delivery 6

Please order as shown

Spring Type, Direct-Mount

Code	Type	Takeover Method	Pad Material	Color
J-WEU46	Spring Type,	Screw Type	Nitrile Rubber NBR	Black
J-WEU47	Direct-Mount		Silicon Rubber S	White

The first perspective

Spring Type, Direct-Mount

Part Number		Spring Max. Load (N)	Weight (g)
Code	Pad Diameter d		
	4-10		54
	4-20		54.5
	5-10	7.0~12.6	54
	5-20		54.5
	6-10		54
6-20		54.5	

J-WEU46
J-WEU47

Part Number
Code d
J-WEU46 4-10
J-WEU47 5-10
J-WEU46-d4-10

Discount price
Per 1~29 30~
Price 100% Additional quotation

Delivery 6

Please order as shown

(Precision)Vacuum Pad (Precision)Vacuum Pad with Fitting

◀ for Thin Objects

Vacuum Pads D7

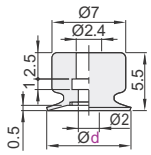
☑ Vacuum Pad

Code	Material	Color
J-WEP46	Nitrile Rubber NBR	Black
J-WEP47	Phlorosilicon S	Light Brown

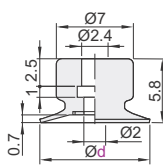


Inventory

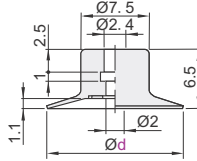
Pad Diameter $\varnothing 8$



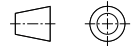
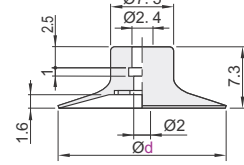
Pad Diameter $\varnothing 10$



Pad Diameter $\varnothing 15$



Pad Diameter $\varnothing 20$



The first perspective

Part Number	
Code	Pad Diameter d
J-WEP46	8
J-WEP47	10
	15
	20



Part Number	
Code	d
J-WEP46	8
J-WEP47	15

J-WEP46 - d10



Discount price	
Per	Price
1~29	30~
100%	Additional quotation



Delivery	
Per	Price
1~29	30~
100%	Additional quotation

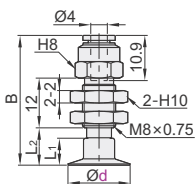
☑ Vacuum Pad with Fitting

Code	Type	Takeover Method	Pad Material	Color
J-WEU61	Fixed Type, Vacuum Port on Top		Nitrile Rubber NBR	Black
J-WEU62			Phlorosilicon FS	Light Brown
J-WEU66	Spring Type, Vacuum Port on Top	One-Touch Type	Nitrile Rubber NBR	Black
J-WEU67			Phlorosilicon FS	Light Brown
J-WEU71	Spring Type, Vacuum Port on Side	Screw Type	Nitrile Rubber NBR	Black
J-WEU72			Phlorosilicon FS	Light Brown
J-WEU76	Spring Type, Direct-Mount		Nitrile Rubber NBR	Black
J-WEU77		Phlorosilicon FS	Light Brown	

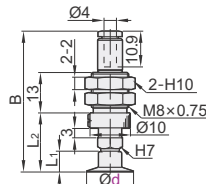


Inventory

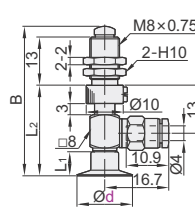
Fixed Type, Vacuum Port on Top
J-WEU61/62



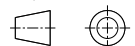
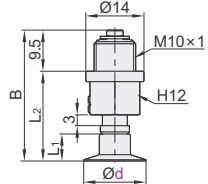
Spring Type, Vacuum Port on Top
J-WEU66/67



Spring Type, Vacuum Port on Side
J-WEU71/72



Spring Type, Direct-Mount
J-WEU76/77



The first perspective

☑ Fixed Type, Vacuum Port on Top

Part Number		B	L ₁	L ₂	Weight (g)
Code	Pad Dia. d				
J-WEU61	8	30.3	5.5	8	10.2
J-WEU62	10	30.6	5.8	8.3	10.2
J-WEU66	15	31.3	6.5	9	10.3
J-WEU67	20	32.1	7.3	9.8	10.4

☑ Spring Type, Vacuum Port on Top

Part Number		B	L ₁	L ₂	Spring Max. Load (N)	Weight (g)
Code	Pad Dia. d					
J-WEU66	8	42.2	5.5	16.5	1.0~1.9	8.9
J-WEU67	10	42.5	5.8	16.8		8.9
J-WEU71	15	43.2	6.5	17.5		9
J-WEU72	20	44	7.3	18.3		9.1

☑ Spring Type, Vacuum Port on Side

Part Number		B	L ₁	L ₂	Spring Max. Load (N)	Weight (g)
Code	Pad Dia. d					
J-WEU71	8	39.5	5.5	23.5	1.0~1.9	14.2
J-WEU72	10	39.8	5.8	23.8		14.2
J-WEU76	15	40.5	6.5	24.5		14.3
J-WEU77	20	41.3	7.3	25.3		14.4

☑ Spring Type, Direct-Mount

Part Number		B	L ₁	L ₂	Spring Max. Load (N)	Weight (g)
Code	Pad Dia. d					
J-WEU76	8	30.5	5.5	21	2.3~3.9	14.2
J-WEU77	10	30.8	5.8	21.3		14.2
J-WEU71	15	31.5	6.5	22		14.3
J-WEU72	20	32.3	7.3	22.8		14.4



Part Number	
Code	d
J-WEU66	10
J-WEU67	15

J-WEU66 - d10



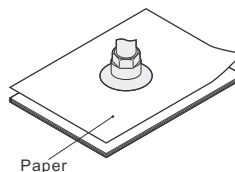
Discount price	
Per	Price
1~29	30~
100%	Additional quotation



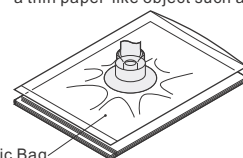
Delivery	
Per	Price
1~29	30~
100%	Additional quotation

☑ Characteristic

Thin object type is suitable for conveying a thin paper-like object such as vinyl.



Paper



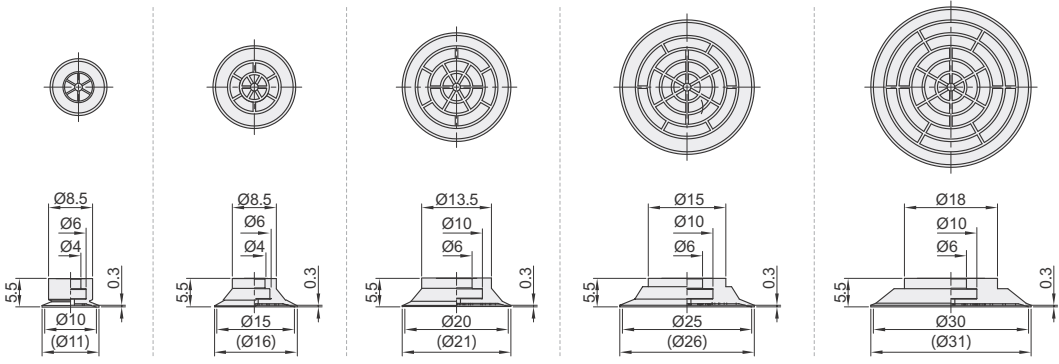
Plastic Bag

Flat Vacuum Pad

Code	Type	Material	Color
J-WEB11	Adsorption Surface with Groove	Nitrile Rubber	Black
J-WEB12		Silicon Rubber	Milky White
J-WEB13		Conductive Silicon Rubber	Black/Red Dot



Pad Diameter $\varnothing 10$ Pad Diameter $\varnothing 15$ Pad Diameter $\varnothing 20$ Pad Diameter $\varnothing 25$ Pad Diameter $\varnothing 30$



The first perspective

Part Number	
Code	Pad Diameter d
	10
J-WEB11	15
J-WEB12	20
J-WEB13	25
	30



Part Number	
Code	d
J-WEB11	$\varnothing 10$
J-WEB12	15
J-WEB11 - d10	



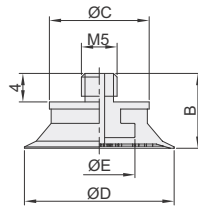
Discount price	
Per	Price
1~29	30~
100%	Additional quotation



Delivery	
10	

Flat Vacuum Pad with Fitting(Adsorption Surface with Groove)

Code	Type	Takeover Method	Pad Material	Pad Color	Pad Type
J-WEY31	Fixed Type, Direct-Mount	Screw Type	Nitrile Rubber	Black	J-WEY11
J-WEY32			Silicon Rubber	Milky White	J-WEY12
J-WEY33			Conductive Silicon Rubber	Black/Red Dot	J-WEY13



The first perspective

Part Number		D	B	C	E
Code	Pad Diameter d				
	10	11		$\varnothing 8$	$\varnothing 6$
J-WEY31	15	16			
J-WEY32	20	21	10.5		
J-WEY33	25	26		$\varnothing 14$	$\varnothing 10$
	30	31			



Part Number		D
Code	d	
J-WEY31	$\varnothing 10$	11
J-WEY32	15	16
J-WEY31 - d10		



Discount price	
Per	Price
1~29	30~
100%	Additional quotation



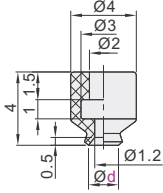
Delivery	
12	

(Standard) 1-Stage Vacuum Pad

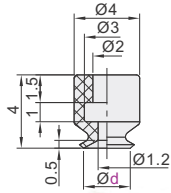
Code	Material	Color
WEM01	Nitrile Rubber	Black
WEM02	Silicon Rubber	White



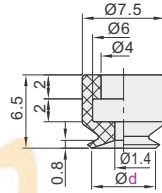
Pad Diameter $\varnothing 2$



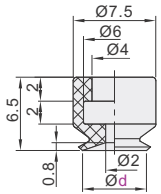
Pad Diameter $\varnothing 3.5$



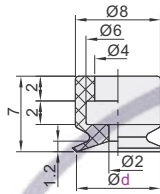
Pad Diameter $\varnothing 5$



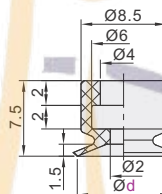
Pad Diameter $\varnothing 6$



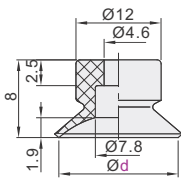
Pad Diameter $\varnothing 8$



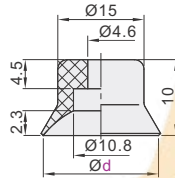
Pad Diameter $\varnothing 10$



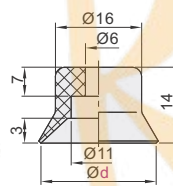
Pad Diameter $\varnothing 15$



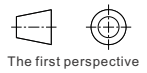
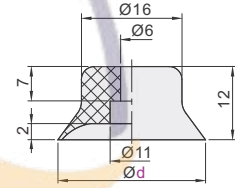
Pad Diameter $\varnothing 20$



Pad Diameter $\varnothing 25$



Pad Diameter $\varnothing 30$



Part Number	
Code	Pad Diameter d
	2
	3.5
	5
	6
WEM01	8
WEM02	10
	15
	20
	25
	30



Part Number	
Code	d
WEM01	6
WEM02	8

WEM01-d6



Discount price		
Per	1~29	30~
Price	100%	Additional quotation

Delivery
10

Vacuum Pads
D7

(Standard) 1-Stage Vacuum Pad with Fitting

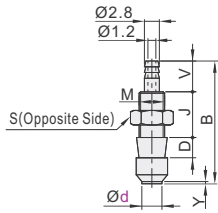
- Vertical Connection
- Horizontal Connection

Vertical Connection

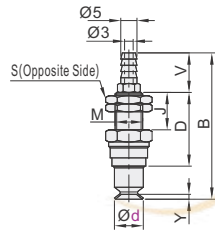
Code	Type	Pad Material	Color
WEH02	Vertical	Nitrile Rubber	Black
WEH03	Connection	Silicon Rubber	White



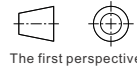
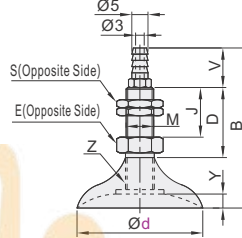
Pad Diameter $\varnothing 2, 3.5$



Pad Diameter $\varnothing 5\sim 10$



Pad Diameter $\varnothing 15\sim 30$



The first perspective

Part Number		B	D	E	M	V	J	S	Y	Z
Code	Pad Dia. d									
WEH02	2	23.5	3	—	M5×0.5	8.5	8	7H	0.5	—
	3.5									
	5									
	6									
WEH03	8	30.5	14	10H	M8×1.25	10	12	12H	1.2	—
	10									
	15	46	22	—	—	16	15	10H	1.9	M5
	20									
	25	62	32	14H	M10×1.5	20	14H	2.3	3.0	M6
	30									
									2.0	



Part Number	B
Code d	
WEH02 10	46
WEH03 15	

WEH02-d10

Discount price
Per 1~29 30~
Price 100% Additional quotation

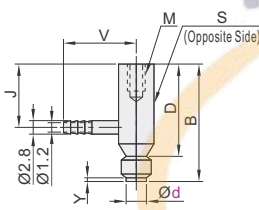
Delivery
10

Horizontal Connection

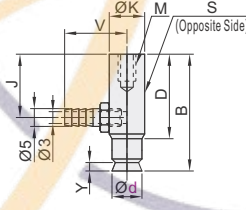
Code	Type	Pad Material	Color
WEH06	Horizontal	Nitrile Rubber	Black
WEH07	Connection	Silicon Rubber	White



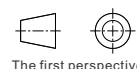
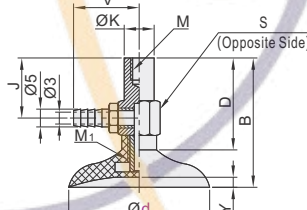
Pad Diameter $\varnothing 2, 3.5$



Pad Diameter $\varnothing 5\sim 10$



Pad Diameter $\varnothing 15\sim 30$



The first perspective

Part Number		B	D	S	M	V	J	K	Y	M ₁
Code	Pad Dia. d									
WEH06	2	20	16	5	M3 Depth 5	11	11	—	0.5	—
	3.5									
	5									
	6									
WEH07	8	29.5	22.5	10	M4 Depth 6	21	13	10	1.2	—
	10									
	15	30	22	14	—	—	14	1.9	M5	
	20									
	25	46	32	—	—	—	20	2.3	3.0	M6
	30									
									2.0	



Part Number	B
Code d	
WEH06 10	30
WEH07 15	

WEH06-d10

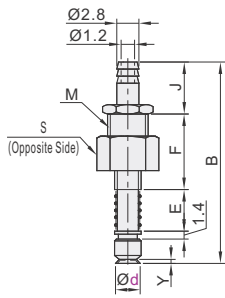
Discount price
Per 1~29 30~
Price 100% Additional quotation

Delivery
10

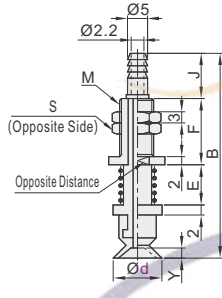
Code	Type	Pad Material	Color
WEH11	Vertical Spring	Nitrile Rubber	Black
WEH12	Type	Silicon Rubber	White



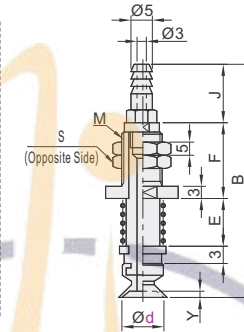
Pad Diameter $\varnothing 2, 3.5$



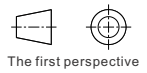
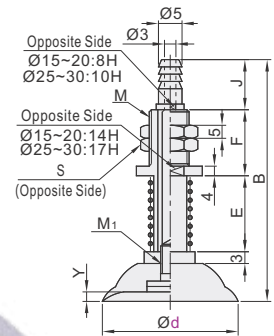
Pad Diameter $\varnothing 5-8$



Pad Diameter $\varnothing 10$



Pad Diameter $\varnothing 15-30$



Part Number		Stroke	B	E	Y	M	M ₁	F	J	S
Code	Pad Dia. d									
WEH11 WEH12	2	2.5	28.5	5.1						
	3.5	2.5	28.5	5.1	0.5	M5×0.5		8		7
		5	33.5	10.1						
		3	37.5	6						
	5	10	51.5	20					10	
		3	37.5	6	0.8					
	6	10	51.5	20		M9×1	—	13		12
		10	51.5	20						
	8	10	52	20						
		15	62	30	1.2					
		4	56.5	8						
	10	10	68.5	20	1.5				19	14
		20	88.5	40					—	—
		4	54	8						
	15	10	66	20	1.9	M11×1		19		
		20	86	40						
		4	56	8			M5		16	14
	20	10	68	20	2.3					
		20	88	40						
		6	71	13						
25	15	88	30	3.0						
	30	118	60							
	6	69	13			M14×1.5	M6	24	17	17
30	15	86	30	2.0						
	30	116	60							



Part Number	Code	d	Stroke
WEH11	WEH12	30	15
		30	30

WEH11-d30-15



Discount price	
Per	1~29 30~
Price	100% Additional quotation



Delivery
10

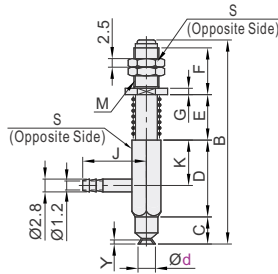
(Standard) 1-Stage Vacuum Pad with Fitting

Horizontal Spring Type

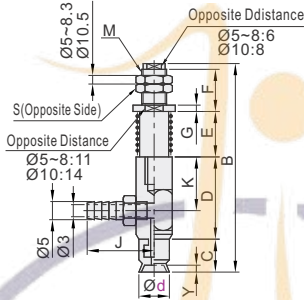
Code	Type	Pad Material	Color
WEH16	Horizontal Spring Type	Nitrile Rubber	Black
WEH17	Type	Silicon Rubber	White



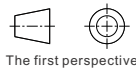
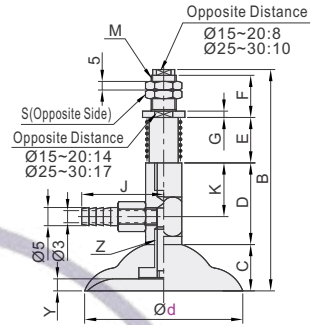
Pad Diameter $\varnothing 2, 3.5$



Pad Diameter $\varnothing 5 \sim 10$



Pad Diameter $\varnothing 15 \sim 30$



Part Number		Stroke	B	C	D	E	F	M	J	K	S	G	Y	Z
Code	Pad Dia. d													
WEH16	2	2.5	35.7			4.5								
	3.5	2.5	35.7	4	16.4	4.5	9	M5×0.8	11	11	7	1.5	0.5	
		5	40.7			9.5								
	5	3	51			6								
		10	65	6.5		20								0.8
	6	10	65			20	13	M9×1			12	—		—
		10	65.5			20			21	13				1.2
	8	15	75.5	7	22.5	30								
		4	60			8								
	10	10	72	7.5		20	19	M11×1			14	—		1.5
		20	92			8								
	15	4	60			8								
		10	72	8		20								1.9
	20	20	92			40	19	M11×1	21	14	14	3		M5
		4	62		22	8								
	20	10	74	10		20								2.3
		20	94			40								
	25	6	87			13								
		15	104	14		30								3
	30	30	134			60								
6		85		32	13	24	M14×1.5	23	20	17	4		M6	
30	15	102	12		30								2	
	30	132			60									



Part Number	Code	d	Stroke	B
WEH16	WEH17	30	15	102
WEH16	WEH17	30	30	132

WEH16 - d30 - 15



Discount price	
Per	1~29 30~
Price	100% Additional quotation



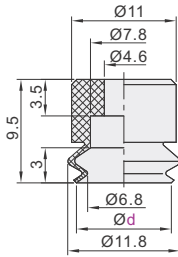
Delivery
10

(Standard) 2-Stage Vacuum Pad

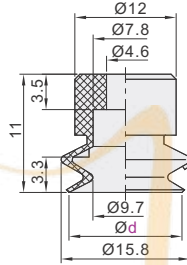
Code	Material	Color
WEM06	Nitrile Rubber	Black
WEM07	Silicon Rubber	White



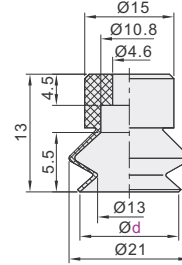
Pad Diameter $\varnothing 10$



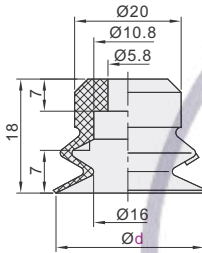
Pad Diameter $\varnothing 15$



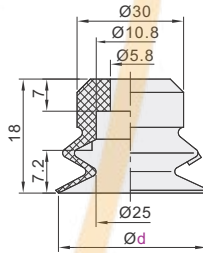
Pad Diameter $\varnothing 20$



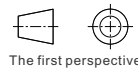
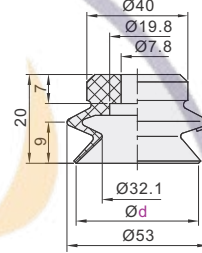
Pad Diameter $\varnothing 30$



Pad Diameter $\varnothing 40$



Pad Diameter $\varnothing 50$



Part Number	
Code	Pad Diameter d
	10
	15
WEM06	20
WEM07	30
	40
	50



Part Number	
Code	d
WEM06	10
WEM07	15

WEM06-d10



Discount price		
Per	1~29	30~
Price	100%	Additional quotation



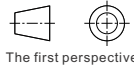
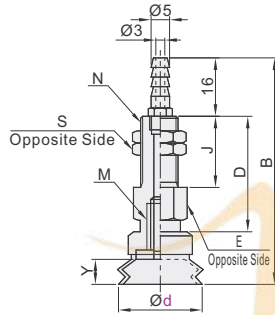
(Standard)2-Stage Vacuum Pad with Fitting

- Vertical Connection
- Horizontal Connection

Vacuum Pads D7

Vertical Connection

Code	Type	Pad Material	Color
WEH31	Vertical Connection	Nitrile Rubber	Black
WEH32		Silicon Rubber	White



Part Number		B	D	E	N	J	S	Y	M	
WEH31 WEH32	Code	Pad Diameter d								
		10	47.5					3		
		15	49		10	M8	15	10	4.5	M5
		20	51	22					5.5	
		30	66						8	M6
		40	66		14	M10	20	14		
	50	68						9	M8	

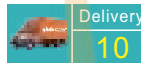


Part Number	d	B
WEH31	10	47.5
WEH32	15	49

WEH31-d10

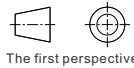
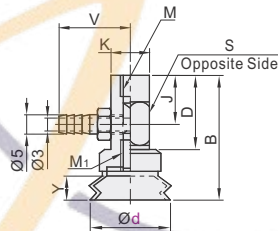


Discount price
Per 1~29 30~
Price 100% Additional quotation



Horizontal Connection

Code	Type	Pad Material	Color
WEH36	Horizontal Connection	Nitrile Rubber	Black
WEH37		Silicon Rubber	White



Part Number		B	D	S	M	J	K	Y	V	M1	
WEH36 WEH37	Code	Pad Diameter d									
		10	31.5					3			
		15	33	22	10	M4 Depth 6	14	10	4.5	16	M5
		20	35						5.5		
		30	50						8	18	M6
		40	50	32	14	M6 Depth 8	20	12			
	50	52						9		M8	

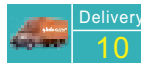


Part Number	d	B
WEH36	10	31.5
WEH37	15	33

WEH36-d10



Discount price
Per 1~29 30~
Price 100% Additional quotation

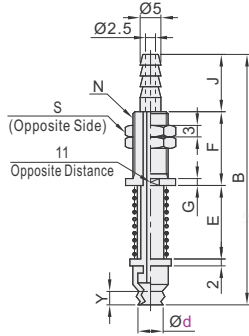


Vertical Spring Type ▶ (Standard)2-Stage Vacuum Pad with Fitting

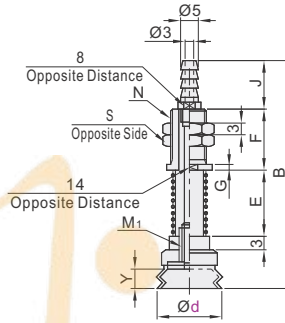
Code	Type	Pad Material	Color
WEH41	Vertical Spring	Nitrile Rubber	Black
WEH42	Type	Silicon Rubber	White



Pad Diameter $\varnothing 6, 8$



Pad Diameter $\varnothing 10\sim 50$



The first perspective

Part Number		Stroke	B	E	F	N	J	S	G	Y	M ₁
Code	Pad Diameter d										
WEH41 WEH42	6	3	40	6							
	8	3	40	6	13	M9×1	10	12	2	4.2	—
		10	54	20							
		4	55.5	8							
	10	10	67.5	20						3	
		20	87.5	40							
		4	57	8	19	M11×1	16	14	3		M5
	15	10	69	20						4.5	
		20	89	40							
		4	59	8							
	20	10	71	20	19	M11×1	16	14	3	5.5	M5
		20	91	40							
		6	75	13							
	30	15	92	30							
		30	122	60							
		6	75	13							8
	40	15	92	30	24	M14×1.5	17	17	4		M6
		30	122	60							
		15	94	30							
	50	30	124	60							9
	50	164	100								



Please order as shown

Part Number	Code	d	Stroke
WEH41	WEH42	10	10
WEH41-d10-4			



Discount price	
Per	1~29 30~
Price	100% Additional quotation

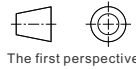
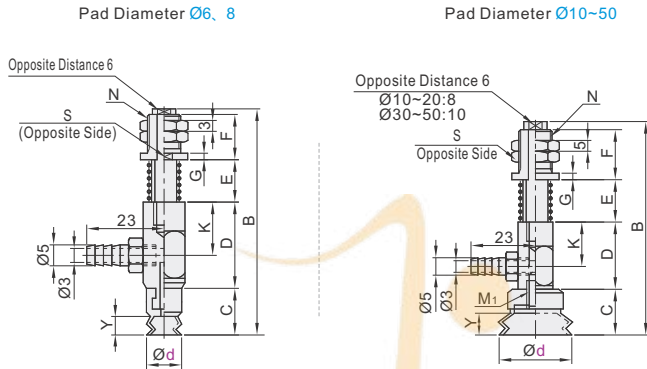


Delivery
10

(Standard)2-Stage Vacuum Pad with Fitting ◀ Horizontal Spring Type



Code	Type	Pad Material	Color
WEH46	Horizontal Spring	Nitrile Rubber	Black
WEH47	Type	Silicon Rubber	White



Vacuum Pads D7

Part Number		Stroke	B	C	D	E	F	N	K	S	G	Y	M1
Code	Pad Diameter d												
WEH46 WEH47	6	3	53.5			6							
	8	10	67.5	9	22.5	6	13	M9×1	13	11	2	4.2	—
		4	61.5			8							
	10	10	73.5	9.5		20						3	
		20	93.5		22	40	19	M11×1	14	14	3		M5
		4	63			8							
	15	10	75	11		20						4.5	
		20	95			40							
		4	65			8							
	20	10	77	13	22	20	19	M11×1	14	14H	3	5.5	M5
		20	97			40							
		6	91			13							
	30	15	108			30							
		30	138			60							
		50	178	18		100							8
	40	6	91			13	24	M14×1.5	20	17H	4		M6
		15	108		32	30							
		30	138			60							
		15	110			30							9
	50	30	140	20		60							
	50	180			100								



Part Number	Code	d	Stroke
WEH46			
WEH47	10	10	10

WEH46-d10-4



Discount price	
Per	1~29 30~
Price	100% Additional quotation



Delivery
10

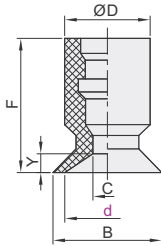
(Standard) Vertical Vacuum Port Connecting Vacuum Pad



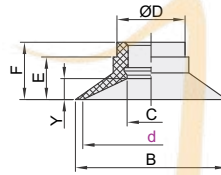
Vertical Vacuum Port Connecting Vacuum Pad

Code	Type	Material	Color
WEM11	Flat Type	Nitrile Rubber	Black
WEM12		Silicon Rubber	White
WEM21		Nitrile Rubber	Black
WEM22	Flat Type with Ribs	Silicon Rubber	White
WEM31	Bellows Type	Nitrile Rubber	Black
WEM32		Silicon Rubber	White

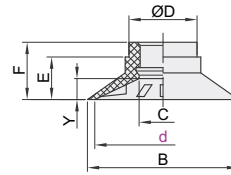
Flat Type
Pad Diameter $\varnothing 2\sim 8$



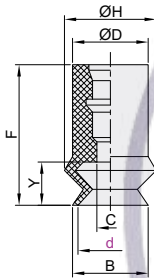
Flat Type
Pad Diameter $\varnothing 10\sim 25$



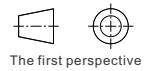
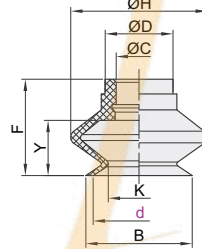
Flat Type with Ribs
Pad Diameter $\varnothing 10\sim 25$



Bellows Type
Pad Diameter $\varnothing 6\sim 8$



Bellows Type
Pad Diameter $\varnothing 10\sim 25$



Flat Type

Part Number	B	C	D	E	F	Y
Code	Pad Dia. d					
WEM11	2	2.6	1.2			
	4	4.8	1.6	7	-	0.8
	6	7				
	8	9	2.5			12
WEM12	10	12		9	7.7	3
	13	15				
	16	18	4		8.2	12.5
	20	23				3.5
	25	28		10	9.5	14

Flat Type with Ribs

Part Number	B	C	D	E	F	Y
Code	Pad Dia. d					
WEM21	10	12			7.7	12
	13	15		9	7.7	12
	16	18	4		8.2	12.5
	20	23			9.5	14
	25	28		10	9.5	14

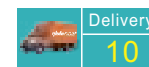
Bellow Type

Part Number	B	C	F	K	D	H	Y
Code	Pad Dia. d						
WEM31	6	7				9	4
	8	9	2.5		7	10	
	10	12		6		14	5.5
	13	15		9	9	19	7.5
	16	18	4		10	21	8.5
	20	22			10	25	
	25	27		16		28	10.5

Flat Type

Part Number	B
Code	d
WEM11	6
WEM12	8

WEM11-d6



Discount price	Per	1~29	30~
Price	100%	Additional quotation	

(Standard) Vertical Vacuum Port Connecting Vacuum Pad with Fitting

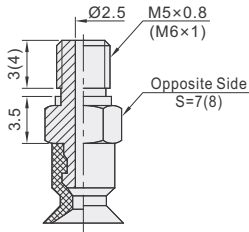
Thread Connection
Non-Rotating



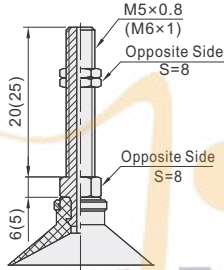
Code	Type	Installation and Connection Method	Takeover Method	Vacuum Pad Type
WEJ03	Non-Rotating	Thread Connection	Threaded	Flat Type
WEJ11			Tapped	Flat Type with Ribs Bellow Type

Threaded Connection WEJ03

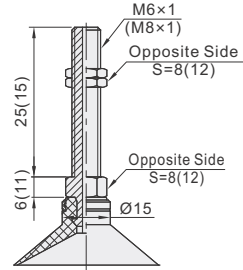
Pad Diameter $\varnothing 2 \sim 8$



Pad Diameter $\varnothing 10 \sim 16$

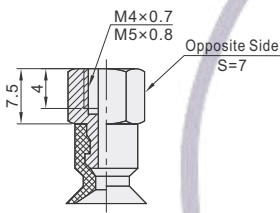


Pad Diameter $\varnothing 20 \sim 25$

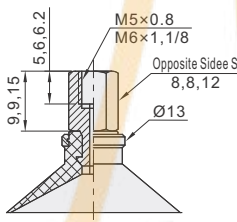


Tapped Connection WEJ11

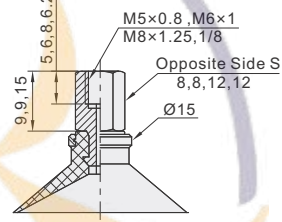
Pad Diameter $\varnothing 2 \sim 8$



Pad Diameter $\varnothing 10 \sim 16$



Pad Diameter $\varnothing 20 \sim 25$



Part Number		Vacuum Pad Type	Takeover Method	
Code	Pad Diameter d		WEJ03 Threaded	WEJ11 Tapped
Threaded Connection WEJ03	2	Flat Type		
	4	WEM11 (Nitrile Rubber)		B4 (M4x0.7)
	6	WEM12 (Silicon Rubber)		B5 (M5x0.8)
	8	Flat Type with Ribs	A5 (M5x0.8) A6 (M6x1)	
Tapped Connection WEJ11	10	WEM21 (Nitrile Rubber)		B5 (M5x0.8)
	13	WEM22 (Silicon Rubber)		B6 (M6x1) B01 (Rc1/8)
	16	Bellow Type		
	20	WEM31 (Nitrile Rubber)	A6 (M6x1)	B5 (M5x0.8) B6 (M6x1)
	25	WEM32 (Silicon Rubber)	A8 (M8x1)	B8 (M8x1.25) B01 (Rc1/8)

- ❗ Flat type with ribs vacuum pad without d2 ~ d8 specifications.
- ❗ Bellow suction cup without d2 ~ d4 specifications.



Part Number Code	Pad Diameter d	Vacuum Pad Type	Takeover Method	
			WEJ03	WEJ11
WEJ03	6	WEM11 (Nitrile Rubber)	A5 (M5x0.8)	B4 (M4x0.7)
WEJ11	8	WEM12 (Silicon Rubber)	A6 (M6x1)	B5 (M5x0.8)

WEJ03 - d6 - WEM11 - A6



Discount price		
Per	1~29	30~
Price	100%	Additional quotation



Delivery	
	10

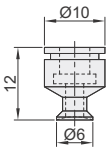
Light Vacuum Pad Light Vacuum Pad with Fitting

Light Vacuum Pad

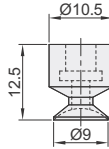
Code	Type	Material	Color
WEB01	Light Vacuum Pad	Silicon Rubber	Milky White



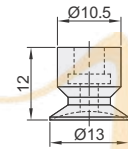
Pad Diameter Ø6



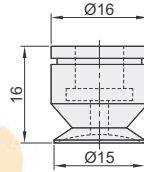
Pad Diameter Ø9



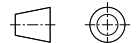
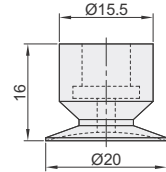
Pad Diameter Ø13



Pad Diameter Ø15



Pad Diameter Ø20



The first perspective

Part Number	
Code	Pad Diameter d
WEB01	6
	9
	13
	15
	20

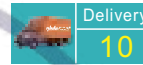


Part Number	
Code	d
WEB01	Ø6
	9

WEB01 - d6



Discount price	
Per	Price
1~29	100%
30~	Additional quotation



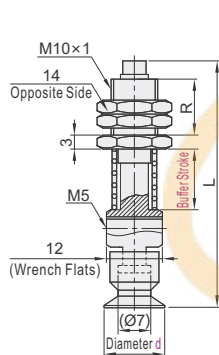
Light Vacuum Pad with Fitting

Code	Type	Takeover Method	Vacuum Pad Type
WEY01	Spring Type, Double Side Vacuum Port	Tapped	WEB01
WEY02	Spring Type, Top Vacuum Port		



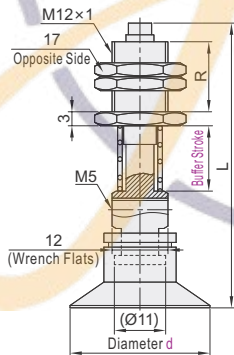
Spring Type, Double Side Vacuum Port
WEY01

Pad Diameter Ø6~13

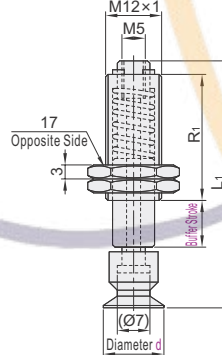


Spring Type, Top Vacuum Port
WEY02

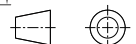
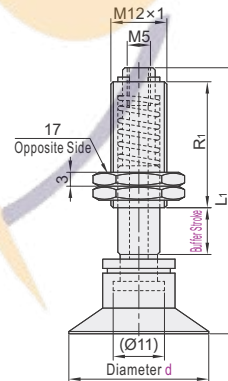
Pad Diameter Ø15~20



Pad Diameter Ø6~13



Pad Diameter Ø15~20



The first perspective

Part Number		Buffer Stroke	WEY01				WEY02			
Code	Pad Dia. d		R	L	R ₁	L ₁	R	L	R ₁	L ₁
WEY01	6	5		46.9	22	41.9				
		10		51.9	27	51.9				
		15		56.9	32	61.9				
WEY02	9	5	12	47.4	22	42.4				
		10		52.4	27	52.4				
		15		57.4	32	62.4				
	13	5		46.9	22	41.9				
		10		51.9	27	51.9				
		15		56.9	32	61.9				

Part Number		Buffer Stroke	WEY01				WEY02			
Code	Pad Dia. d		R	L	R ₁	L ₁	R	L	R ₁	L ₁
WEY01	15	5	15	55	22	46				
		10		60	27	56				
		15		65	32	66				
WEY02	20	5	15	55	22	46				
		10		60	27	56				
		15		65	32	66				



Part Number		Buffer Stroke
Code	d	
WEY01	Ø15	15
WEY02	Ø20	5

WEY01 - d15 - 15



Discount price	
Per	Price
1~29	100%
30~	Additional quotation



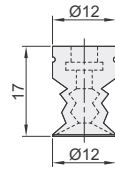
Bellow Light Vacuum Pad Bellow Light Vacuum Pad with Fitting

■ Bellow Light Vacuum Pad

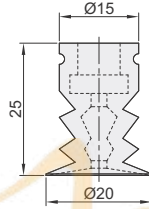
Code	Type	Material	Color
WEB03	Bellow Light Type	Silicon Rubber	Milky White



Pad Diameter $\varnothing 12$



Pad Diameter $\varnothing 20$



Part Number	
Code	Pad Dia. d
WEB03	12
	20



Please order as shown

Part Number	
Code	d
WEB03	$\varnothing 12$
	$\varnothing 20$

WEB03-d12



Discount price	
Per	Price
1~29	30~
100%	Additional quotation



Delivery	
Per	Price
1~29	30~
10	Additional quotation

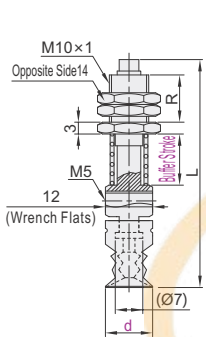
■ Bellow Light Vacuum Suction Cup Units

Code	Type	Takeover Method	Vacuum Pad Type
WEY11	Spring Type, Double Side Vacuum Port	Tapped	WEB03
WEY12	Spring Type, Top Vacuum Port		



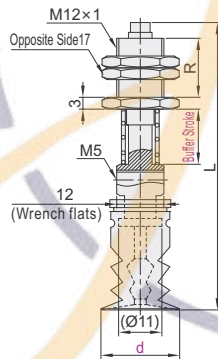
Spring Type, Double Side Vacuum Port
WEY11

Pad Diameter $\varnothing 12$

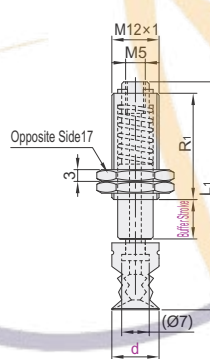


Spring Type, Top Vacuum Port
WEY12

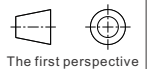
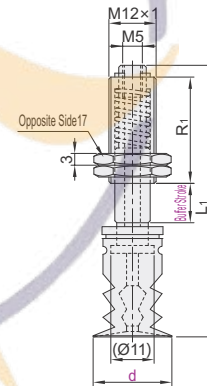
Pad Diameter $\varnothing 20$



Pad Diameter $\varnothing 12$



Pad Diameter $\varnothing 20$



Part Number		Buffer Stroke	WEY11		WEY12	
Code	Pad Dia. d		R	L	R ₁	L ₁
WEY11	12	5	51.9	22	46.9	
		10	56.9	27	56.9	
	20	5	61.9	32	66.9	
		10	64	22	47	
WEY12	15	5	69	27	57	
		10	74	32	67	



Please order as shown

Part Number		Buffer Stroke
Code	d	
WEY11	$\varnothing 12$	$\varnothing 15$
WEY12	$\varnothing 20$	5

WEY11-d12-15



Discount price	
Per	Price
1~29	30~
100%	Additional quotation



Delivery	
Per	Price
1~29	30~
10	Additional quotation